

## Supplementary Information

# Efficient conversion of aldoximes into nitriles and ketoximes into amides using bis-morpholinophosphorylchloride

P Purnachandra Rao<sup>a,b</sup>, Shaik Nowshuddin<sup>a</sup>, Anjali Jha<sup>b,\*</sup>, B Leela Maheswara Rao<sup>a</sup>, Murali K Divi<sup>a</sup> & M N A Rao<sup>a</sup>

<sup>a</sup>Divis Research Center, Divis Laboratories Limited, B-34, Industrial Estate, Sanathnagar, Hyderabad, Telangana-500 018, India

<sup>b</sup>Department of Chemistry, GIS, GITAM (Deemed to be University), Visakhapatnam, Andhra Pradesh-530 045, India

\*E-mail: ajhamani@gitam.edu

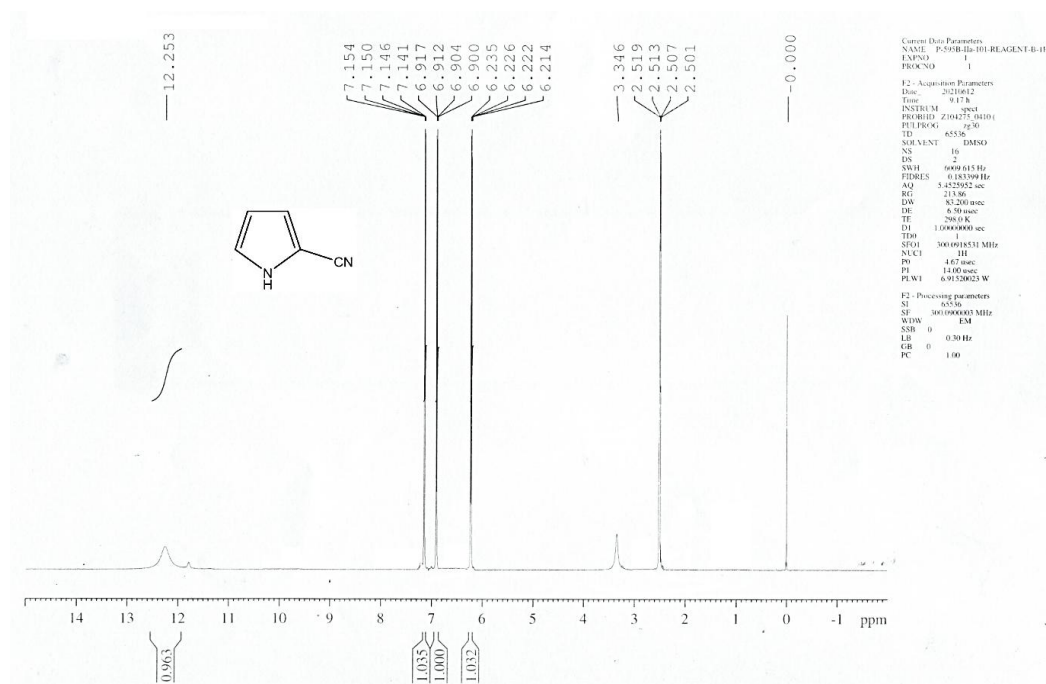


Fig. S1 — <sup>1</sup>H NMR spectra for Pyrrole-2-carbonitrile (2i)

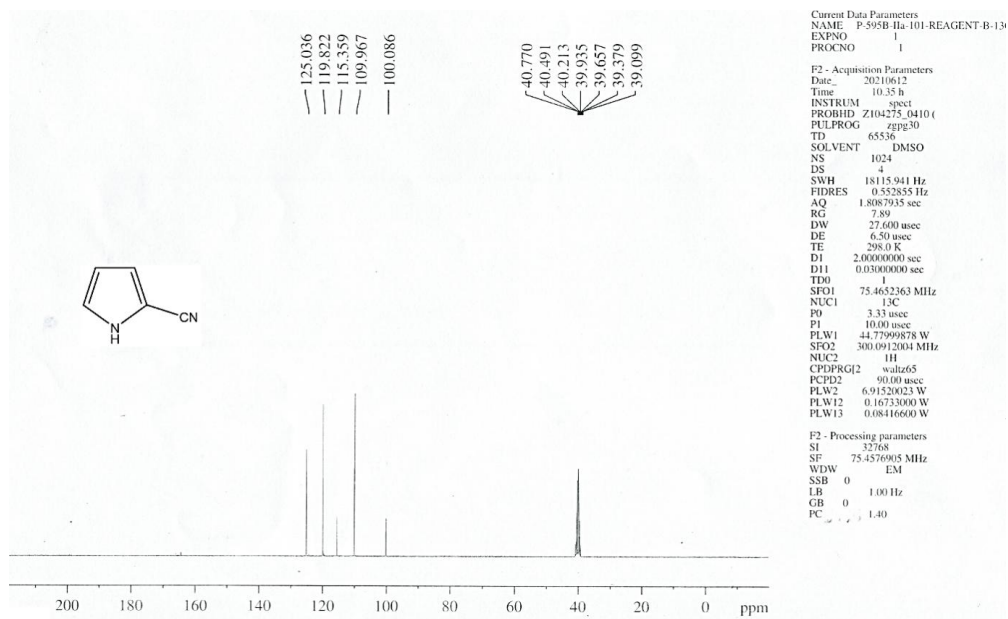


Fig. S2 — <sup>13</sup>C NMR spectra for Pyrrole-2-carbonitrile (**2i**)

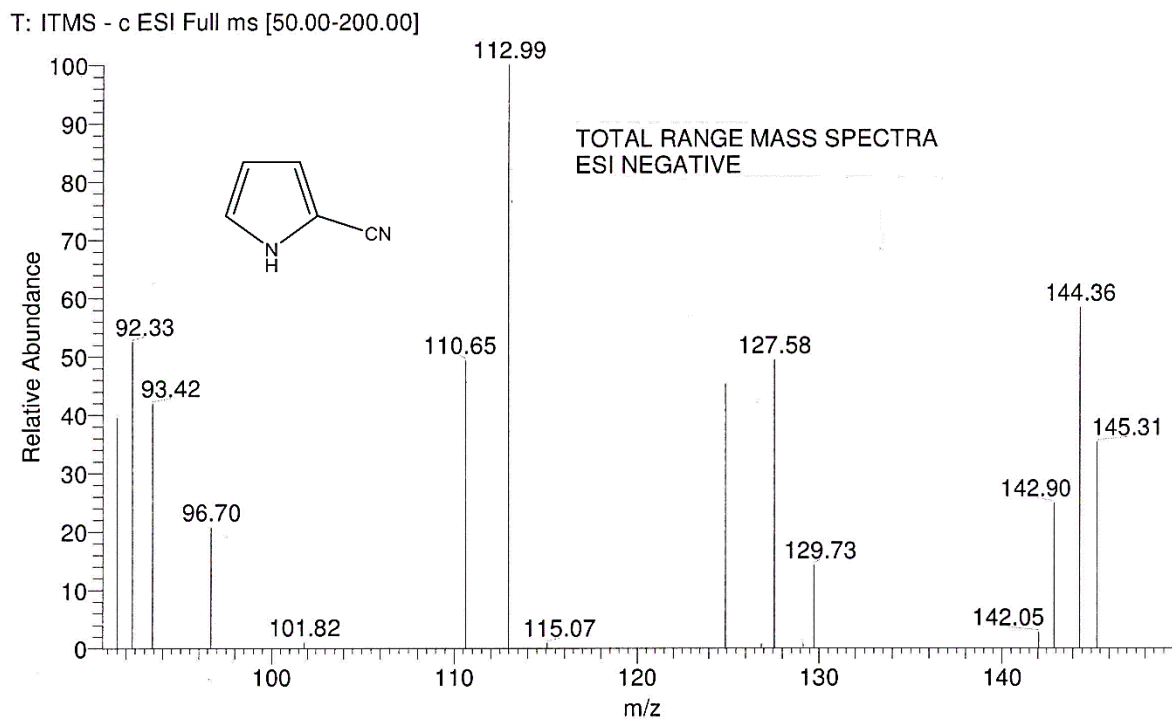
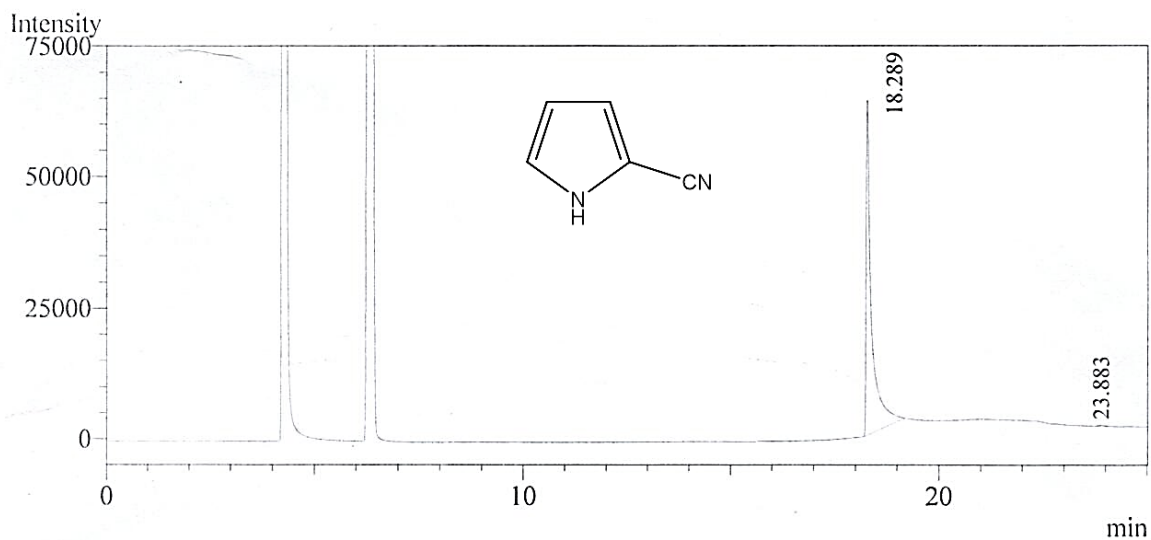


Fig. S3 — Mass spectra for Pyrrole-2-carbonitrile (**2i**)



Peak Table - Channel 1

Peak#	Ret. Time	Height	Area	Area%
1	18.289	63723	573212	99.6569
2	23.883	236	1973	0.3431
Total		63959	575185	100.0000

Fig. S4 — GC chromatogram of Pyrrole-2-carbonitrile (**2i**)

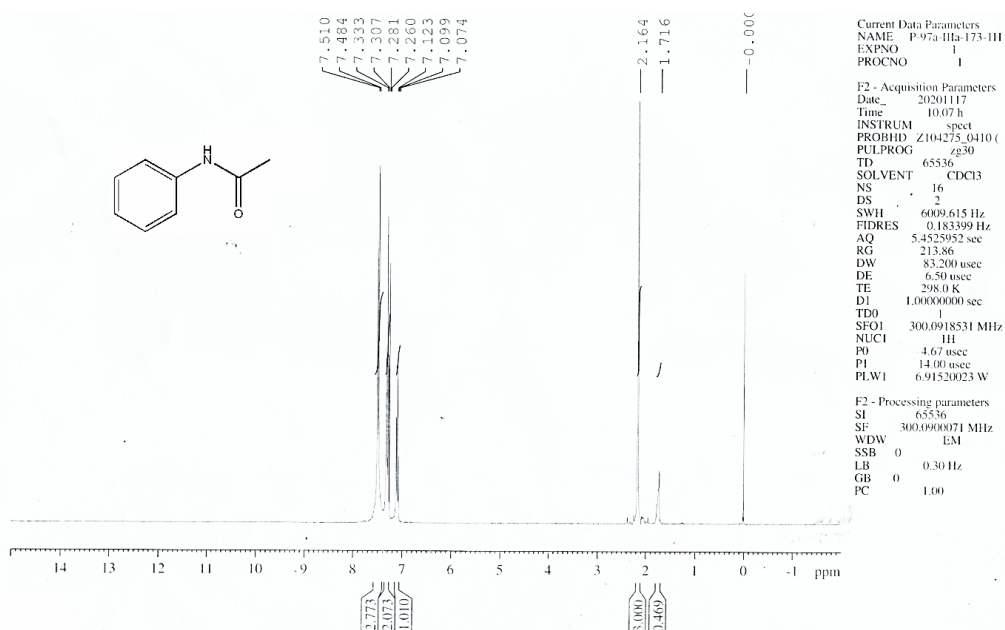


Fig. S5 — <sup>1</sup>H NMR spectra for N-phenylacetamide (**4a**)

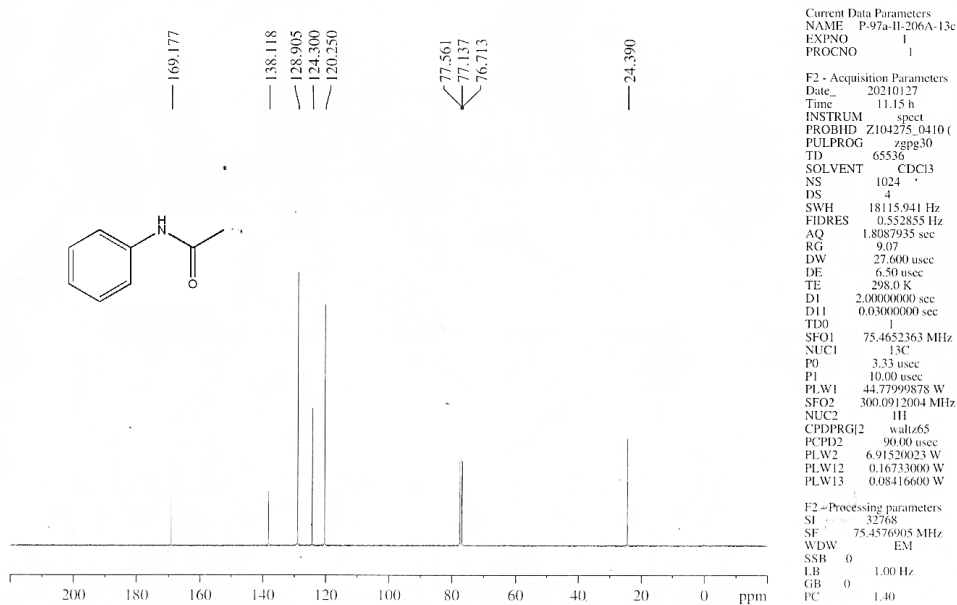


Fig. S6 — <sup>13</sup>C NMR spectra for N-phenylacetamide (4a)

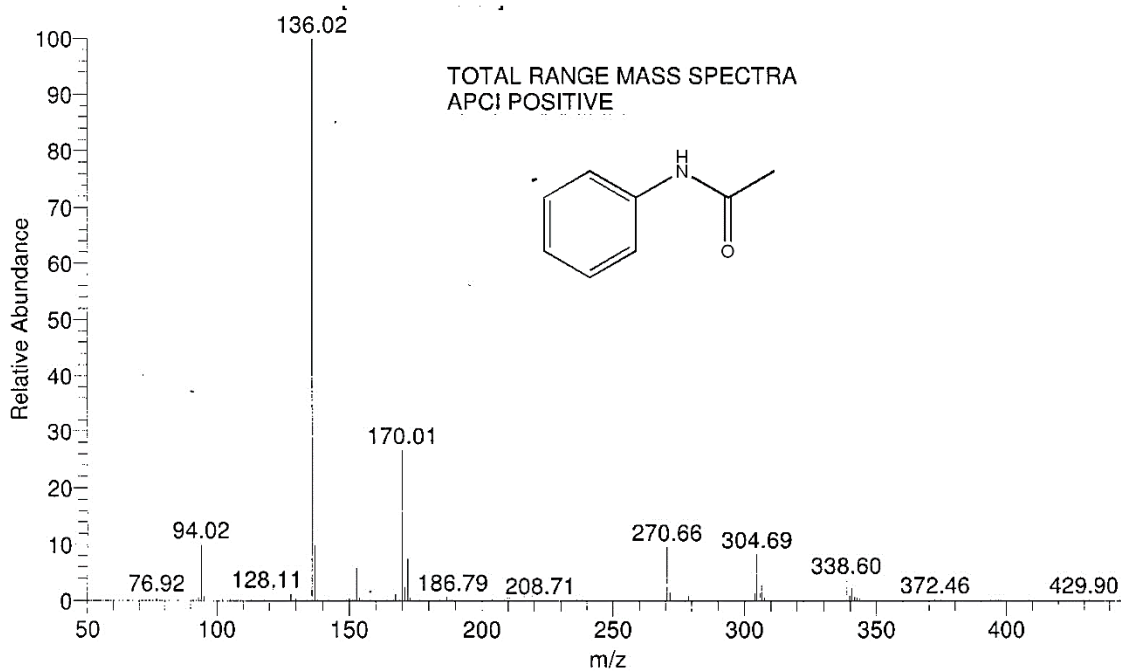
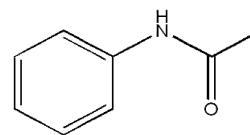
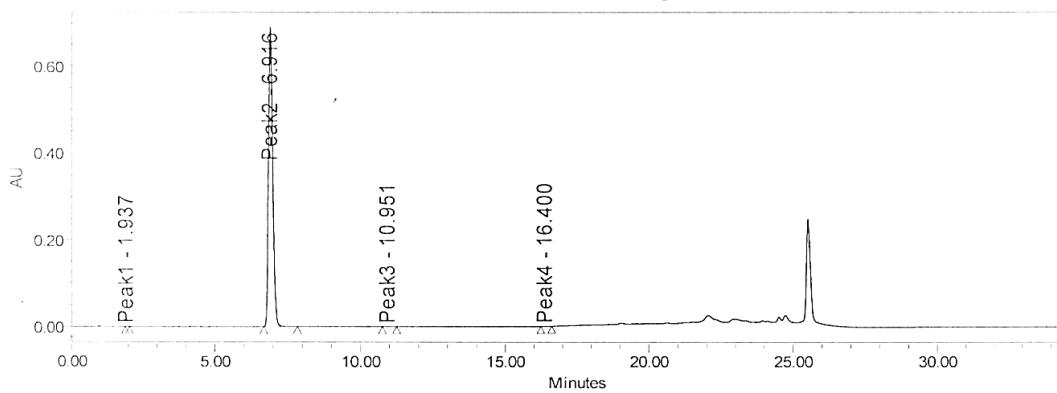


Fig. S7 — Mass spectra for N-phenylacetamide (4a)

COLUMN : PUROSPHER STAR RP-18, 250\*4.0mm,5µm  
Temp : 45°C  
Flow : 1.5 ml/min  
Mobile phase : A) BUFFER:ACN (900:100)  
B) BUFFER:ACN (100:900)



### Auto-Scaled Chromatogram



### Peak Results

	RT	Height	Area	% Area	RT Ratio
1	1.937	86.6	353.7	0.01	0.280
2	6.916	689622.2	6972167.9	99.95	1.000
3	10.951	161.0	2011.6	0.03	1.583
4	16.400	77.5	897.0	0.01	2.371

Fig. S8 —HPLC chromatogram for N-phenylacetamide (**4a**)