



Wild edible plants of Jharkhand and their utilitarian perspectives

R Kumar & P Saikia*[†]

Department of Environmental Sciences, Central University of Jharkhand, Brambe, Ranchi 835 205, Jharkhand, India

E-mail: [†]purabi.saikia83@gmail.com

Received 24 April 2019; revised 19 December 2019

The wild edible plants (WEPs) form an important constituent of traditional diets of the tribal community of Jharkhand. Most of the rural populations residing in different parts of Jharkhand depend on plants and their parts to fulfil their daily needs and have developed unique knowledge about their utilization. The present study has been conducted to document the indigenous knowledge related to the diversity and uses of wild edible weeds in day to day life of tribal in Jharkhand. A total of 77 different herbs, shrubs, and small trees have been recorded belonging to 38 families of which 73 are edible either as a vegetable or as medicine or in both forms directly or after proper processing. The common wild edible herbs frequently distributed in the study area are *Hemidesmus indicus* R. Br. (51 quadrats out of 134) and *Cynodon dactylon* (L.) Pers. (47 quadrats out of 134). Similarly, the most frequent edible shrubs are *Clerodendrum viscosum* Vent., nom. superfl. (40), *Lantana camara* L. (35), *Croton oblongifolius* Roxb. (34) and *Flemingia strobilifera* (L.) R.Br. (20). The diversity of WEPs in Jharkhand has found to be depleted due to their over exploitation and unsustainable harvesting for foods, medicines as well as because of various other biotic interferences including grazing, herbivory and anthropogenic fire. Therefore, there is an urgent need to conserve these valuable Wild edible plants (WEPs) and use it in a sustainable manner to ensure future demand. Besides, further research is also warrant to explore the therapeutic potentials as well the nutritive values of WEPs, so that, it can give a scientific basis for the further development of herbal drugs and traditional foods.

Keywords: Edible plants, Jharkhand, Medicinal uses, Tribal population

IPC Code: Int. Cl.²⁰: A23B 9/00, A61K 9/00, A61K 36/00

India is one of the 17 mega diversity nations with over 45,000 plant species representing about 7% of the world's flora. It holds the 10th position among the 25 most plant-rich countries of the world with 24.39% forests cover¹. India has *ca.* 800 edible plant species that are grown in the wild and consume mainly by tribal populations². Jharkhand is one of the biodiversity rich states of India with extensive forests resources (29.65% of the total geographic area) because of its origin, diverse physiographic and climatic conditions³. Besides, it is well known for its rich mineral resources with over 40% of the country's total mineral reserve. Wild plants and its parts are used by most of the rural Indian populations (*ca.* 85%) as traditional medicines, diet supplements, and for livelihood security, socio-economic upliftment^{4,5}. Indigenous communities of both industrialized and developing countries use wild plants for various day to day activities and the mean use of wild plant is 120 species per community⁶. Wild plants are used in several ways from timbers, fuelwoods, foods, wild vegetables, spices, wild fruits, thatch, construction materials, and raw materials for

industries, and often as traditional medicines. WEPs are those naturally grown plants and their parts including roots, shoots, leafy greens, fleshy fruits, nuts, grains and seeds that can be used for food if gathered at the appropriate stage of growth⁷. It is commonly grown in forests, agriculture and non-agriculture fields as well as along the roadsides, drains and wastelands. WEPs can be classified on the basis of economic importance^{8,9} or based on the utility of plants as a whole or any plant parts¹⁰. WEPs may be herbs, shrubs or trees and can be used directly or after cooking and processing. Forests of Jharkhand are mainly tropical deciduous type and highly species rich¹¹. The state of Jharkhand has a large tribal population (26.3%) with a total of 32 tribes predominant in 17 districts out of the total 24¹. Knowledge of harvest and preparation of WEPs is important¹² and the indigenous communities reside in different parts of Jharkhand have a rich knowledge of WEPs and have developed unique knowledge of their mode of utilization. The dependency on WEPs are quite high in Jharkhand as forests are considered as a high value commodity across the state. Most of the indigenous peoples' of Jharkhand are dependent on forests as well as on

*Corresponding author

agriculture to fulfil their sustenance needs. In general, tribal used to live in close association with nature and maintain a connection between man and the environment¹³. Besides, agriculture holds an important place in the rural economy of Jharkhand as *ca.* 80% of the total population of Jharkhand depend on agriculture and associated activities for their livelihood¹⁴ and the major crops are paddy, maize, wheat and vegetable followed by pulse and oilseeds. The traditional knowledge of uses of various medicinal plants is well known and evident in several literatures^{15,16,17}. According to ethnobotanical surveys, more than 30,000 plant species are edible, of which *ca.* 7,000 species have been used for nourishment¹⁸. Wild fruits can supplement the daily diet requirement and minimize the use of exotic fruits^{19,20}. WEPs play a significant role in the livelihood and food security of tribal and poor rural communities in many areas in the world^{21,22}. WEPs mainly the leafy vegetables use to have high nutritive and medicinal values²³ and are integral part of daily diet of indigenous people of Jharkhand, Odisha and West Bengal²⁴. Besides, it can be used for erosion control, traditional medicines, and also for the supply of organic matter and mineral nutrients to the soil. WEPs are used as food to maintain good health as it is an important source of vitamins, minerals and all other required nutrients. Very limited studies have been done so far to document the status, diversity and uses of edible weeds in Jharkhand. Therefore, the present study attempted to document indigenous knowledge related to the diversity and uses of edible weeds in day to day life of tribal in Jharkhand.

Materials and methods

Study area

The present study is conducted in 13 (out of 18) randomly selected blocks of Ranchi, Jharkhand, viz., Burmu, Namkum, Ormanjhi, Ratu, Mandar, Bero, Nagri, Lapung, Kanke, Angara, Itki, Chano and Khelari. Ranchi lies in south chotanagpur administrative division located at 23.35°N latitude, 85.33°E longitude near to the Tropic of Cancer and altitude varies from 500 to 700 m above mean sea level (MSL). The district is bounded by Ramgarh and Hazaribagh districts in the north, Khunti and Saraikela Kharsawan in the south, Gumla, Latehar and Lohardaga in the east and Saraikela Kharsawan, and Purulia district of West Bengal in the west. Ranchi has a relatively moderate climate compared to rest of state of India with hilly topography. The total geographical area of Ranchi is 5097 sq. km divided into Ranchi and Bundu sub-divisions. Ranchi is home to tropical moist deciduous and tropical dry deciduous forests with a total forests cover of 1164 sq. km (22.84%), out of which 63 sq. km (5.41%) very dense, 364 sq. km (31.27%) moderately dense and 737 sq. km (63.31%) open forests¹.

Sampling techniques

The study is conducted by laying 134 different quadrats of 1 m x 1 m size (134 m² sampled plots) for the enumeration of edible weeds, including small trees, shrubs, herbs, and grasses in 67 different locations (**Fig. 1**) during October 2017 to September 2018. Knowledge regarding the WEPs and their mode

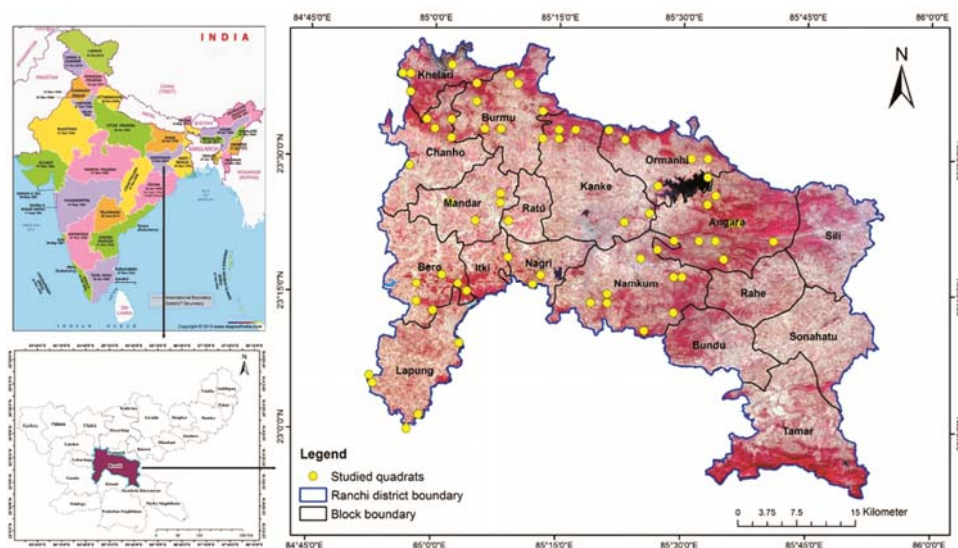


Fig. 1 — Map of the study sites (selected blocks of Ranchi, Jharkhand) showing the locations (67) of studies quadrats

of uses have been recorded by the interview based field work with selected respondents (a total of 26 individuals) from 13 different blocks of Ranchi.

Results and discussions

Because of little land holding and low profitability of land, most of the tribal families of Jharkhand are keeping up a differentiated example of occupations including daily wage, crafting, small scale business including selling vegetables and essentials in local markets. Forests act as the second major contributor to livelihoods of the underprivileged indigenous people of Jharkhand after agriculture. Socioeconomic conditions had exhibited a significant positive correlation with the livelihood dependency on forests²⁵. Work cooperation of tribal ladies is viewed as vital for the survival of tribal families and they play a crucial role on sustenance gathering, rope making, nectar gathering, natural restorative plant accumulation, container making by bamboos and rattans, as well as fishing and chasing²⁶. Forests provide a wide array of livelihoods for rural tribal communities in the form of direct employment, self-employment and secondary employment in India^{27,28}. The present study has recorded a total of 77 different herbs, shrubs and small trees belonging to 41 families, and out of which 73 are edible either as medicine or as vegetable or both collected from 134 studied quadrats of 67 different forests. Various species of WEPs belonging to different genera and family are consumed by the local and tribal population in Jharkhand as per their availability. Fabaceae is the most dominant family with 7 species (9.59%) followed by Rubiaceae with 6 (8.22%), Apocynaceae with 5 (6.85%), Asteraceae and Poaceae with 4 each (5.48%), Acanthaceae, Malvaceae and Euphorbiaceae with 3 each (4.11%), Amaranthaceae and Verbinaceae with 2 species each (2.74%) and rest 34 families are monotypic contributing 46.57% of the total species richness (Fig. 2). Out of 73 edible plant species, 27 species (36.99%)

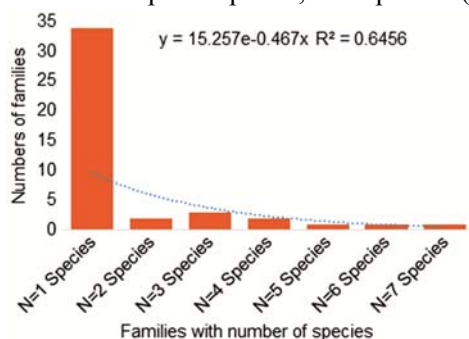


Fig. 2 — Distribution of families according to species number of Wild edible plants (WEPs)

contain hundred percent edible portions and of which 4 shrubs, 18 herbs, and 5 ferns, fungi and climbers. The consumable portion of 19 species (26.03%) is leaf or leafy shoots (EL), one of them is tree, 11 shrubs (*C. viscosum*, *Barleria cristata* L., *Sida cordifolia* L., *Scoparia dulcis* L., *Chenopodium album* L., etc.), 05 herbs (*Oxalis corniculata* L., *Alternanthera paronychioides* A. St.-Hil., *Desmodium triflorum* L., *Mesosphaerum suaveolens* (L.) Kuntze., etc.) and 02 ferns, fungi and climbers (*Lygodium japonicum* (Thunb.) Sw., *Marsilea minuta* L.). Six species have edible root or tubers (RT) among them 01 is tree (*Elaeodendron glaucum* (Rottb.) Pers., 01 shrub (*Ventilago maderaspatana*) and 04 herbs (*H. indicus*, *Arisaema heterophyllum* Blume, *Evolvulus nummularius* L. and *Curculigo orchioides* Gaertn.). The consumable portion of 05 species (6.85 %) is fruits and leaves (FL), 02 of them are trees (*Meyna laxiflora* Robyns., and *Woodfordia fruticosa*), 01 shrub (*Carissa spinarum* L.), 01 herb (*Phyllanthus niruri* L.) and 01 fern, fungus and climber (*Vitis repanda* (Vahl.) Wight & Arn.). Three species (4.11%) have edible leaves and root (LR), among them 02 shrubs (*C. opaca* Stapf ex Haines and *Murraya koenigii* (L.) Spreng.), and 01 herb (*Cyperus rotundus* L.). The consumable portion of 05 species (6.85%) is leaves and seed (LS), 03 of them are shrubs, and 01 each is tree and herb. The consumable portion of 08 species (10.96%) is miscellaneous edibles parts (M), among them 03 trees (*Wendlandia heynei* Schult.) Santapau & Merchant, *Madhuca longifolia* (J. Koenig ex L.) J.F.Macbr. and *Holarrhena pubescence* Wall. ex G. Don), 03 herbs (*Asparagus densiflorus* (Kunth) Jessop, *Drimia indica* (Roxb.) Jessop and *Curcuma aromatica* Salisb.) and 02 shrubs (*Urena lobata* L. and *Randia aculeate* L.) (Fig. 3). Details of WEPs of Jharkhand are listed in Table 1 arranged on the basis of edible parts.

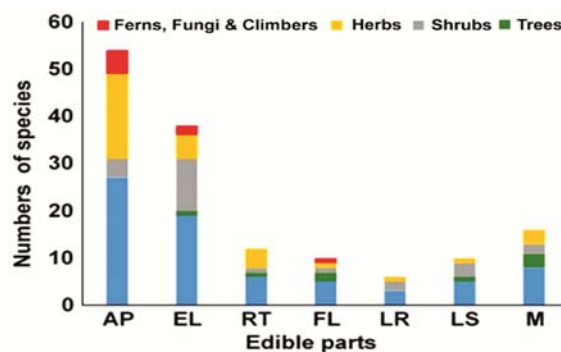


Fig. 3 — Wild edible plants (WEPs) bearing edible parts. AP=Plants bearing all edible parts, EL=Edible leaves or leafy shoots, RT=Edible roots or tubers, FL=Edible fruits and leaves, LR=Edible leaves and roots, LS=Edible leaves and seeds, M=Miscellaneous edible parts

Table 1 — List of wild edible plants (WEPs) used by tribal of Jharkhand, Eastern India

Sl.No	Species Name	Family	Local name	Habit	IUCN Red listed category
Edible entire plants (AP)					
1.	<i>Agaricus bisporus</i> (J. E. Lange) Imbach, 1946	Agaricaceae	Mushroom	F	
2.	<i>Ageratum conyzoides</i> L.	Asteraceae	Gandhari, Puru	S	LC
3.	<i>Andrographis paniculata</i> (Burm. fil.) Nees	Acanthaceae	Kaalmedh	H	
4.	<i>Baccharoides anthelmintica</i> (L.) Moench	Asteraceae	Ironweed	H	
5.	<i>Cissus quadrangularis</i> L.	Vitaceae	Hadjod	C	
6.	<i>Coccinia grandis</i> (L.) Voigt	Cucurbitaceae	Kundri	C	
7.	<i>Croton oblongifolius</i> Roxb.	Euphorbiaceae	Croton	S	
8.	<i>Cynodon dactylon</i> (L.) Pers.	Poaceae	Common Grass	H	
9.	<i>Dolichos trilobus</i> L.	Papilionaceae	Van Kurthi	H	
10.	<i>Elephantopus scaber</i> L.	Asteraceae	Mayur Jhanti	H	
11.	<i>Eleusine indica</i> (L.) Gaertn.	Poaceae	Goosegrass	H	LC
12.	<i>Emilia sonchifolia</i> (L.) DC. ex Wight	Asteraceae	Tasse Flower	H	
13.	<i>Euphorbia hirta</i> L.	Euphorbiaceae	Dudhi	H	
14.	<i>Flacourtia indica</i> (Burm. f.) Merr.	Salicaceae	Ramontchi	S	LC
15.	<i>Geastrum saccatum</i> Fr. 1829	Geastraceae	Rugra	F	
16.	<i>Heliotropium indicum</i> L.	Boraginaceae	Hathi-Sura	H	
17.	<i>Ichnocarpus frutescens</i> L.	Apocynaceae	Dudhi Latar	H	
18.	<i>Leucostegia immersa</i> Wall. ex C. Presl	Hypodematiaceae	Davallia	H	
19.	<i>Mimosa pudica</i> L.	Fabaceae	Lajwanti	H	LC
20.	<i>Oldenlandia diffusa</i> (Willd.) Roxb	Rubiaceae	Pitpapra	H	LC
21.	<i>Panicum maximum</i> Jacq.	Poaceae	Guinea Grass	S	
22.	<i>Peucedanium dhana</i> Ham	Apiaceae	Hill Carrot	H	
23.	<i>Spermacoce hispida</i> L.	Rubiaceae	Shaggy Button Weed	H	
24.	<i>Spermacoce ocyroides</i> Burm.f.	Rubiaceae	Button weed	H	
25.	<i>Swertia chirata</i> (Roxb.) Karst.	Gentianaceae	Chirayta	H	
26.	<i>Thespesia lampas</i> (Cav.) Dalzell & A. Gibson	Malvaceae	Ban Kapas	H	
27.	<i>Tinospora cordifolia</i> (Willd.)	Menispermaceae	Giloy	C	
Edible leaves or leafy shoots (EL)					
28.	<i>Alternanthera paronychioides</i> A. St.-Hil.	Amaranthaceae		H	
29.	<i>Amaranthus viridis</i> L.	Amaranthaceae	Jungali Chaulayi	H	
30.	<i>Bambusa vulgaris</i> Schrad. ex J.C.Wendl., nom. cons. prop	Poaceae	Bamboo	T	
31.	<i>Barleria cristata</i> L.	Acanthaceae	Philippine Violet	S	
32.	<i>Chenopodium album</i> L.	Amaranthaceae	Bathuwa	S	
33.	<i>Clerodendrum viscosum</i> Vent., nom. superfl.	Verbinaceae	Ghanto	S	
34.	<i>Desmodium triflorum</i> L.	Papilionaceae	Kudaliya	H	LC
35.	<i>Flemingia strobilifera</i> (L.) R.Br.	Papilionaceae	Kanphuta	S	
36.	<i>Mesospaerum suaveolens</i> (L.) Kuntze.	Lamiaceae	Ban Tulsi	H	
37.	<i>Ipomoea carnea</i> Forst. fil.	Convolvulaceae	Thethar	S	
38.	<i>Lantana camara</i> L.	Verbinaceae	Putus	S	
39.	<i>Lygodium japonicum</i> (Thunb.) Sw.	Lygodiaceae		F	
40.	<i>Marsilea minuta</i> L.	Marsileaceae	European water Clover.	F	LC
41.	<i>Oxalis corniculata</i> L.	Oxalidaceae	Netho Sag	H	
42.	<i>Scoparia dulcis</i> L.	Scrophulariaceae	Ban Dhania	S	
43.	<i>Senna tora</i> (L.) Roxb.	Fabaceae	Chakor	S	
44.	<i>Sida cordifolia</i> L.	Malvaceae	Bala	S	
45.	<i>Sida rhombifolia</i> L.	Malvaceae	Sida	S	
46.	<i>Smilax zeylanica</i> L.	Acanthaceae	Ramdatwan	S	

(contd.)

Table 1 — List of wild edible plants (WEPs) used by tribal of Jharkhand, Eastern India (contd.)

Sl.No	Species Name	Family	Local name	Habit	IUCN Red listed category
Plants bearing edible root or tubers (RT)					
47.	<i>Arisaema heterophyllum</i> Blume	Araceae	Dancing Crane	Cobra Lily	H LC
48.	<i>Curculigo orchioides</i> Gaertn.	Hypoxidaceae	Kaki	Musli	H
49.	<i>Elaeodendron glaucum</i> (Rottb.) pers	Celastraceae	Ratangaura		T DD
50.	<i>Evolvulus nummularius</i> L.	Convolvulaceae	Dwarf Morning Glories.		H
51.	<i>Hemidesmus indicus</i> R. Br.	Asclepidaceae	Anantmul		H
52.	<i>Ventilago maderaspatana</i> Gaertn	Rhamnaceae	Pitti		S
Plants bearing edible fruits and leaves (FL)					
53.	<i>Carissa spinarum</i> L.	Apocynaceae	Karanda		S
54.	<i>Meyna laxiflora</i> Robyns.	Rubiaceae	Katai		T
55.	<i>Phyllanthus niruri</i> L.	Euphorbiaceae	Bhumi Amla		H
56.	<i>Vitis repanda</i> (Vahl.) Wight & Arn.	Vitaceae	Pani Bel		C
57.	<i>Woodfordia fruticosa</i> (L.) Kurz	Lythraceae	Dhawai		T LC
Plants bearing edibles leaves and seeds (LS)					
58.	<i>Agave americana</i> L.	Agavaceae	Moraba		S
59.	<i>Senna sophera</i> (L.) Roxb.	Caesalpinaceae	Chakara		S
60.	<i>Senna obtusifolia</i> (L.) H.S.Irwin & Barneby	Fabaceae	Sicklepod		S LC
61.	<i>Shorea robusta</i> Gaertner f.	Dipterocarpaceae	Sakhua		T LC
62.	<i>Spermacoce articularis</i> L.f.	Rubiaceae	Button Weed		H
Plants bearing edible leaves and roots (LR)					
63.	<i>Carissa opaca</i> Stapf ex Haines	Apocynaceae	Karanda		S
64.	<i>Cyperus rotundus</i> L.	Cypraceae	Motha		H
65.	<i>Murraya koenigii</i> (L.) Spreng.	Rutaceae	Kadhi Patta		S
Plants bearing miscellaneous edible parts (M)					
66.	<i>Asparagus densiflorus</i> (Kunth) Jessop	Asperagaceae	Satawari		H
67.	<i>Curcuma aromatic</i> Salisb	Zingiberaceae	Jangli Haldi		H
68.	<i>Drimia indica</i> (Roxb.) Jessop	Asparagaceae	Ban Piaz		H
69.	<i>Holarrhena pubescens</i> Wall. ex G.Don	Apocynaceae	Koriya		T LC
70.	<i>Madhuca longifolia</i> (J. Koenig ex L.) J.F.Macbr.	Sapotaceae	Mahua		T
71.	<i>Randia aculeata</i> L.	Apocynaceae	Mona Kata		S LC
72.	<i>Urena lobata</i> L.	Malvaceae	Bherlattha		S
73.	<i>Wendlandia heynei</i> (Schult.) Santapau & Merchant	Rubiaceae	Tilai		T

T= Tree, S= Shrubs, H= Herbs, F= Fern and Fungi, C= Climber, LC= Least concern, DD= Data deficient

Local healers have significant knowledge, information, understanding of a wide range of medicinal plants, their formulations and curative properties that are useful to cure the common ailments¹⁵. Some common wild edible medicinal plants, which are frequently used by local tribal of Jharkhand to cure various ailment are shown in Fig. 4. In the present study, WEPs and its parts such as leaves, barks, roots, tubers, bulbs, and seeds are mentioned as useful to treat one or more human health problems (Table 2). The common wild edible herbs of frequent occurrence in the studied forests are *H. indicus* (51 quadrats out of 134), and *C. dactylon* (47 quadrats out of 134). Similarly, the most frequent edible shrubs

are *C. viscosum* (40), *L. camara* (35), *C. oblongifolius* (34) and *F. strobilifera* (20). In terms of density, *C. dactylon* was the most dominant plant with the highest density (54925 individuals ha⁻¹) followed by *D. triflorum* (30149 individuals ha⁻¹), *C. viscosum* (2865 individuals ha⁻¹) and *C. oblongifolius* (2059 individuals ha⁻¹). Out of the 77 recorded WEPs, 14 species (18.18%) are IUCN Red-listed including *A. heterophyllum*, *D. triflorum*, *Eleusine indica* (L.) Gaertn., *Flacourtia indica* (Burm. f.) Merr., *W. fruticosa*, *M. minuta*, etc. 14 WEPs (18%) are exotics in origin, viz., *Ageratum conyzoides* L., *M. suaveolens*, *Mimosa pudica* L., *Agave americana* L., etc.



Fig. 4 — Some important medicinal plants of *Sal* forests of Ranchi, Jharkhand (a) *Mesosphaerum suaveolens* (L.) Kuntze (b) *Asparagus densiflorus* (Kunth) Jessop (c) *Heliotropium indicum* L. (d) *Arisaema heterophyllum* Blume (e) *Andrographis paniculata* (Burm. fil.) Nees (f) *Smilax zeylanica* L.

The diversity of edibles plants (species richness in terms of herbs, shrubs and small trees) are maximum in Kochbong village in Namkum blocks (22 species) followed by Bhasanda village in Bero (21 species) and least in Hotwar in Kanke blocks (05 species).

Species richness in terms of edibles shrubs and small trees are shown in Fig. 5. The food habits of people generally developed according to the availability of food materials in their surroundings²⁹. Among *kharif* weeds, *Senna tora* L., *A. sessilis*, *Amaranthus viridis*

Table 2 — List of medicinal wild edibles plants (WEPs) and their uses

Species Name	Family	Parts consumed	Medicinal properties
<i>Agaricus bisporus</i> (J. E. Lange) Imbach, 1946	Agaricaceae	Whole Plant	Antimicrobial, and anticandidal ^{34,35}
<i>Agave americana</i> L.	Agavaceae	Leaves, Sap, Seeds	Antibacterial, and antifungal properties ³⁶
<i>Ageratum conyzoides</i> L.	Asteraceae	Whole plant	Anti-bacterial, and anti-fungal properties ³⁷
<i>Alternanthera paronychioides</i> A. St.-Hil.	Amaranthaceae	Leaves and young shoots	Antioxidant, and antiglycotoxic ³⁸
<i>Amaranthus viridis</i> L.	Amaranthaceae	Leaves	Diuretic, and purgative ³⁹
<i>Andrographis paniculata</i> (Burm. fil.) Nees	Acanthaceae	Whole Plant	Anticancer, and antimicrobial ⁴⁰
<i>Arisaema heterophyllum</i> Blume	Araceae	Root, Tubers	Subsidence of induration and swelling, quicken the blood clotting, and relieve pains, and kill intestinal parasites in humans, and animals ⁴¹
<i>Asparagus densiflorus</i> (Kunth) Jessop	Asperagaceae	Leaves, Tubers	Antidiarrhoeal potential, and antimicrobial ⁴²
<i>Baccharoides anthelmintica</i> (L.) Moench	Asteraceae	Whole Plant	Anthelmintic ⁴³
<i>Barleria cristata</i> L.	Acanthaceae	Leaves	Used traditionally in toothache, and antiinflammatory ⁴⁴
<i>Carissa opaca</i> Stapf ex Haines	Apocynaceae	Leaves, Roots	Antimicrobial, and antioxidant, used in jaundice, and hepatitis ⁴⁵
<i>Carissa spinarum</i> L.	Apocynaceae	Leaves, Fruits	Vermifuge, and antianthelmintic properties ⁴⁶
<i>Senna sophora</i> (L.) Roxb.	Caesalpinaceae	Seeds, Roots, Barks	Strong analgesic ⁴⁷ , and antiasthmatic ⁴⁸
<i>Chenopodium album</i> L.	Amaranthaceae	Leaves, Shoots, Seeds, Flowers	Used in abdominal pains, eye disease, and throat troubles ⁴⁹
<i>Cissus quadrangularis</i> L.	Vitaceae	Whole Plant	Wound healing and molluscidal activity ⁵⁰
<i>Clerodendrum viscosum</i> Vent., nom. superfl.	Verbinaceae	Leave	Used as strong anthelmintic, antioxidant, and anti-nociceptive activities ⁵¹
<i>Coccinia grandis</i> (L.) Voigt	Cucurbitaceae	Whole Plant	Antidiabetic, anti-inflammatory, and antimicrobial activities ⁵²
	Euphorbiaceae	Whole Plant	Treatment of pain, and stomach diseases ⁵³
<i>Curculigo orchioides</i> Gaertn.	Hypoxidaceae	Tubers	Piles, diarrhoea, gonorrhoea, skin diseases, impotence, jaundice, urinary disorders, and leucorrhoea ⁵⁴
<i>Curcuma aromatic</i> Salisb	Zingiberaceae	Rhizomes	Used in bruises, sprain, hiccough, bronchitis, cough, leukoderma and skin eruptions ⁵⁵ , and also in wound healing ⁵⁶
<i>Cynodon dactylon</i> (L.) Pers.	Poaceae	Whole Plant, Roots	Traditionally used as an agent to control diabetes in India ⁵⁷
<i>Cyperus rotundus</i> L.	Cyperaceae	Leaves, Tubers	Antiparasitic, antipyretic, analgesic, hypolipidemic, and weight control ⁵⁸
<i>Desmodium triflorum</i> L.	Papilionaceae	Leaves	Antibacterial ⁵⁹ , anticonvulsant, and antioxidant ⁶⁰
<i>Dolichos trilobus</i> L.	Papilionaceae	Whole Plant	Used for abortion in the first three months ⁶¹
<i>Drimia indica</i> (Roxb.) Jessop	Asparagaceae	Leaves, Bulbs	Antiulcerous, antinematodal, antitumorous, and anthelmintic ⁶²
<i>Elaeodendron glaucum</i> (Rottb.) Pers.	Celastraceae	Root	Snake bite ⁶³
<i>Elephantopus scaber</i> L.	Asteraceae	Whole Plant, Root	Anti-inflammatory, wound healing and tonic ^{64,65}
<i>Eleusine indica</i> (L.) Gaertn.	Poaceae	Whole Plant	Treatment of influenza, hypertension, oliguria and urine retention ⁶⁶
<i>Emilia sonchifolia</i> (L.) DC. ex Wight	Asteraceae	Whole Plant, Flowers	Treating diarrhea, night blindness, and sore throat ⁶⁷

(contd.)

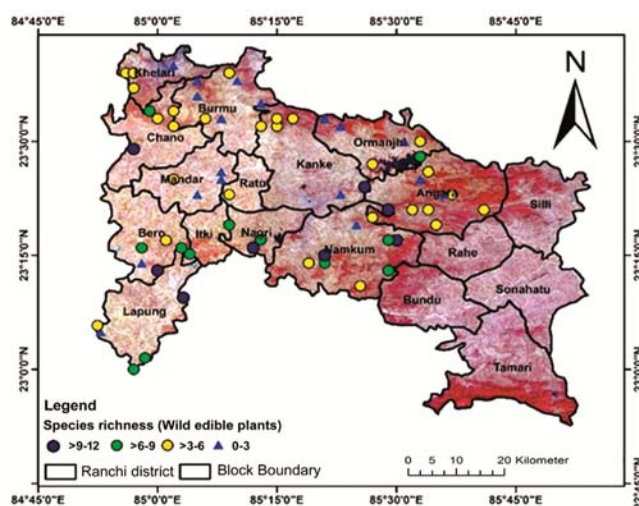
Table 2 — List of medicinal wild edibles plants (WEPs) and their uses (contd.)

Species Name	Family	Parts consumed	Medicinal properties
<i>Euphorbia hirta</i> L.	Euphorbiaceae	Whole Plant	Used traditionally for female disorders, digestive problems, and tumors ⁶⁸
<i>Evolvulus nummularius</i> L.	Convolvulaceae	Roots	Anthelmintic ⁶⁹ , and wound healing ⁷⁰
<i>Flacourtia indica</i> (Burm. f.) Merr.	Salicaceae	Whole Plant	Antimalarial ⁷¹ , anti-inflammatory, and antimicrobial ⁷²
<i>Flemingia stobilifera</i> (L.) R. Br.	Papilionaceae	Tender shoots and leaves	Anthelmintic ⁷³
<i>Heliotropium indicum</i> L.	Boraginaceae	Whole Plant	Used for the treatment of ophthalmic disorders, erysipelas, and pharyngodynia ^{74,75}
<i>Hemidesmus indicus</i> R. Br.	Asclepidaceae	Root	Antidiarrheal ⁶⁹ , and anticancerous ⁷⁶
<i>Holarrhena pubescens</i> Wall. ex G. Don	Apocynaceae	Bark	Used as astringent, anthelmintic, antidotalgic, stomachic, febrifuge, antidropsical, diuretic, also in piles ⁷⁷ , as well as chronic amoebaasis, immune stimulant ³⁶
<i>Mesosphaerum suaveolens</i> (L.) Kuntze.	Lamiaceae	Leaves, Stems, Inflorescence	Used for treating boils, eczema, and diabetes mellitus ^{78,79}
<i>Ichnocarpus frutescens</i> L.	Apocynaceae	Whole Plant	Used in fever, and skin eruption ^{80,81}
<i>Ipomoea carnea</i> Forst. fil.	Convolvulaceae	Leaves, Shoots	Antibacterial ⁸²
<i>Lantana camara</i> L.	verbinaceae	Leaves	Antibacterial, anticancer, antihyperglycemic, and antioxidant ⁸³
<i>Leucostegia immersa</i> Wall. ex C. Presl	Hypodematiaceae	Whole Plant	Used in boils, antibacterial, and constipation ⁸⁴
<i>Lygodium japonicum</i> (Thunb.) Sw.	Lygodiaceae	Tender leaves	Antiviral, and antimicrobial ⁸⁵
<i>Madhuca longifolia</i> (J.Koenig ex L.) J.F. Macbr.	Sapotaceae	Flowers, Fruits	Antipyretic, hepatoprotective, anti-inflammatory, analgesic, antitumor, antiprogestational, antiestrogenic, and wound healing ⁸⁶
<i>Marsilea minuta</i> L.	Marsileaceae	Leaves	Antibacterial, antioxidant, neurodegenerative disorders, anticonvulsive ⁸⁷
<i>Meyna laxiflora</i> Robyns.	Rubiaceae	Fruits, Leaves	Antioxidant ⁸⁸
<i>Mimosa pudica</i> L.	Fabaceae	Whole Plant	Analgesic, anti-inflammatory ⁸⁹ , also used in blood pressure ⁹⁰
<i>Murraya koenigii</i> (L.) Spreng.	Rutaceae	Leaves, Roots	Anthelmintic, and also used in blood disorders ⁹¹
<i>Oldenlandia corymbosa</i> L.	Rubiaceae	Whole Plant	Used to treat skin sores, sore throat, and pelvic inflammatory diseases ⁹²
<i>Oxalis corniculata</i> L.	Oxalidaceae	Leaves	Antioxidant, anticancer, anthelmintic, anti-inflammatory, analgesic, antimicrobial, antiamoebic, antifungal, and diuretic ⁹³
<i>Panicum maximum</i> Jacq.	Poaceae	Whole Plant	Pain-killers, and antidiabetic ⁹⁴
<i>Peucedanium dhana</i> Ham	Apiaceae	Whole Plant	Used in stomach pain, treatment of jaundice, controlling infestation due to hook worms ⁹⁵
<i>Phyllanthus niruri</i> L.	Euphorbiaceae	Leaves, Fruits	Used to reduce blood sugar ⁹⁶ , and also antimalarial ⁹⁷
<i>Randia aculeata</i> L.	Rubiaceae	Leaves, Roots, Seeds, Barks, Fruits	Used in diarrhea, and dysentery ⁹⁸
<i>Bambusa vulgaris</i> Schrad. ex J.C. Wendl., nom. cons. prop	Poaceae	Shoots	Used in epilepsy, fainting, and loss of consciousness in feverish diseases ⁹⁹
<i>Scoparia dulcis</i> L.	Scrophulariaceae	Roots, Stems	Analgesic, antiinflammatory ¹⁰⁰ , and also used in neurotrophic activity ¹⁰¹
<i>Senna obtusifolia</i> (L.) H.S. Irwin & Barneby	Fabaceae	Seed, leaves	Used in diarrhea, fever, and cough ¹⁰²
<i>Senna tora</i> (L.) Roxb.	Fabaceae	Leaves	Antioxidant, antimicrobial, antihepatotoxic, and antidiuretic ¹⁰³

(contd.)

Table 2 — List of medicinal wild edibles plants (WEPs) and their uses (contd.)

Species Name	Family	Parts consumed	Medicinal properties
<i>Shorea robusta</i> Gaertner f.	Dipterocarpaceae	Leaves, Flowers	Analgesic ¹⁰⁴ , treatment of circulatory, digestive, endocrine, respiratory and skeletal systems as well as in infectious diseases ¹⁰⁵
<i>Sida cordifolia</i> L.	Malvaceae	Leaves	Used as antirheumatic, analgesic, antipyretic, antiasthmatic, nasal anticongestant, antiviral, laxative, diuretic, aphrodisiac, hypoglycemic ¹⁰⁶
<i>Sida rhombifolia</i> L.	Malvaceae	Leaves	Antiinflammatory ¹⁰⁷
<i>Smilax zeylanica</i> L.	Acanthaceae	Leaves	Used in dysentery ¹⁰⁸ , and skin diseases ¹⁰⁹
<i>Spermacoce articularis</i> L.f.	Rubiaceae	Leaves, Seeds	Antifungal and antimicrobial ¹¹⁰
<i>Spermacoce hispida</i> L.	Rubiaceae	Whole Plant	Antihyperlipidaemic ¹¹¹
<i>Spermacoce ocyroides</i> Burm.f.	Rubiaceae	Whole Plant	Used against hookworm and ringworm ¹¹²
<i>Swertia chirayta</i> (Roxb.) Karst.	Gentianaceae	Whole Plant	Mitigate inflammation, relaxing to the pregnant uterus, and never ending fevers ⁹⁸
<i>Thespesia lampas</i> (Cav.) Dalzell & A. Gibson	Malvaceae	Whole Plant	Antidiabetic ¹¹³
<i>Tinospora cordifolia</i> (Willd.)	Menispermaceae	Whole Plant	Anticancerous ^{114,115}
<i>Urena lobata</i> L.	Malvaceae	Fruits, Seed	Antimicrobial, and antioxidant ¹¹⁶
<i>Ventilago maderaspatana</i> Gaertn.	Rhamnaceae	Root	Antidiabetic, antihyperlipidaemic, and antioxidant ^{117,118}
<i>Vitis repanda</i> (Vahl.) Wight & Arn.	Vitaceae	Fruits, Leaves	Used in pains in joints, swelling of the testicle, and piles ¹¹⁹
<i>Wendlandia heynei</i> (Schult.) Santapau & Merchant	Rubiaceae	Flowers, Barks, Twigs	Twigs recommended to clean teeth, the flower is used for miscarriage ¹²⁰
<i>Woodfordia fruticosa</i> (L.) Kurz	Lythraceae	Leaves, Fruits	Leprosy, toothache, leucorrhoea, fever, dysentery, and bowel disease ¹²¹

Fig. 5 — Species richness of WEPs in studied *Sal* forests of Ranchi

L., *M. minuta* and *Amaranthus spinosus* L. are quite popular and eaten by all the tribes during the rainy season. During *rabi* season, *C. album*, *C. rotundus*, *Rumex maritimus*, *Geastrum saccatum* Fr. 1829 and *Emilia sonchifolia* (L.) DC. ex Wight, etc. used to be quite dominant and collected by tribes as per their

availability. Besides, few species, viz., *Centella asiatica* L., *Limnophila conferta* Benth, *C. dactylon*, *O. corniculata* and *Euphorbia hirta* L. are available throughout the year. *C. asiatica*, *E. granulata* Forssk., *Limnophila conferta* Benth. and *M. minuta* are commonly found in marshy and damp areas. Some common edible plants frequently used by local people of Jharkhand are shown in Fig. 6. The common threats to the WEPs recorded in the present study are overharvesting by local tribal for vegetable, medicine, and to sell in the local market, recurrent to occasional grazing (almost in all study site and cow, goat, buffalo and sheep are the common grazers), occasional fire (both natural and manmade), and rock mining (in some places), forage and fuelwood collection as well as insect herbivory. Fuelwood collection is one of the major threat for seedling and saplings survival of trees³⁰ and also for the existence of WEPs in natural forests of Jharkhand. 57% households use fuelwood for cooking and heating purposes in Jharkhand and it ranks 11th in terms of fuelwood use³¹. The livelihood dependency on forests of fully and partially dependent communities differ in various regions and it should be taken into consideration in designing the forests



Fig. 6 — Some important wild edible vegetables of *Sal* forests of Ranchi, Jharkhand (a) *Senna obtusifolia* (L.) H.S. Irwin & Barneby (b) *Amaranthus viridis* L. (c) *Senna sophora* L. Roxb. (d) *Chenopodium album* L. (e) *Alternanthera paronychioides* A. St.-Hil. (f) *Murraya koenigii* (L.) Spreng

conservation and management plans³². The exploration of novel, high quality, inexpensive sources of food has always remained a chief concern of all agencies involved in providing passable food and improving the nutritional eminence of the population. In this context, these indigenous, cost-effective, nutritious foods of tribal will play a vital role in food and nutritional security of the nation, as their economic value is beyond dispute. Communities' involvement and participation in the management of forests and delegation of power through access and ownership rights ensures greater security and improved forest management and conservation³². Forests and forests dwellers used to have an intrinsic relationship as they used to get most of their sustenance needs including foods, fuels, construction materials, medicines and recreational, social, religious and cultural identity from the forests. There is a mutualistic relationship between the forests and the forest dwellers that ensured the fulfilment of their daily needs, and in return the protection of forests and environment as a whole³³.

Conclusions

Forests play an important role in the livelihoods of local tribal people through enormous goods (WEPs in terms of fruits, vegetables, medicines, etc.) and services (regulating, provisioning, social, and

economic). The present study has recorded a great diversity of WEPs (73 different species) in the 13 different blocks of Ranchi. The diversity of WEPs in Jharkhand is depleting due to overexploitation and unsustainable harvesting of foods, medicines, as well as due to various other biotic interferences including grazing, herbivory and anthropogenic fire mainly for the collection of flowers of *M. longifolia* during summers (March to May) for the preparation of traditional alcoholic beverages. Therefore, there is an urgent need to conserve these valuable WEPs and use it in a sustainable manner to ensure future demand. On the one hand, this information could help the policy makers to promote these local plants, aiming at improved food and nutrition security. Besides, further research is also warrant to explore the therapeutic potentials as well the nutritive values of WEPs, so that, it can give a scientific basis for the further development of herbal drugs and traditional foods.

Acknowledgement

The authors acknowledge financial support received from Science and Engineering Research Board (SERB), GoI, New Delhi in the form of a R&D project entitled 'Status, Distribution and Composition of *Sal* Forests of Ranchi, Jharkhand, Eastern India in relation to Microclimatic as well as Edaphic conditions' (Ref. No. YSS/2015/000479 dated 12th January 2016). Authors are also thankful to the Jharkhand State Forest Department, Ranchi and local people involved during survey and field sampling for their constant help and support.

References

- 1 FSI, *India State of Forest Report*, Forest Survey of India, Dehradun, India, 2017.
- 2 Bandyopadhyay S & Mukherjee SK, Wild edible plants of Koch Bihar district, West Bengal, *Nat Prod Rad*, 8(1) (2009) 64-72.
- 3 Kumar R & Saikia P, Forests Resources of Jharkhand, Eastern India: Socioeconomic and Bio-ecological Perspectives, In: *Socio-economic and Eco-biological Dimensions in Resource use and Conservation - Strategies for Sustainability*, (N Roy, S Roy Choudhury, S Nautiyal, SK Agarwal & S Bakshi), Springer International Publishing, Switzerland, 2020, 61-100.
- 4 Fransworth NR, Ethnopharmacology and drug development. In: *Ethnobotany and search for New drugs*, (DJ Chadwick & U March), Ciba Foundation Symposium 183, Wiley, Chichester, 1992, 42.
- 5 Jain SK. Ethnopharmacology and drug development. In: *Ethnobotany and search for New drugs*, (DJ Chadwick & U March), Ciba Foundation Symposium 183, Wiley, Chichester, 1992, 153.

- 6 Bharucha Z & Pretty J, The roles and values of wild foods in agricultural systems, *Philos T R Soc*, 365 (2010) 2913-2926.
- 7 Kallas J, *Edible wild plants, The wild food adventure series*, Publisher Gibbs Smith, Layton, Utah, 2010.
- 8 Hill MS, *The panel study of income dynamics: A user's guide*, Vol 2, (Sage Publications, Inc. New York), 1992, 753-761.
- 9 Brouk B, *Plants consumed by man*, (Academic Press Inc. Ltd, London), 1975, 479.
- 10 Singh HB & Arora RK, *Wild edible plants of India*, (The Indian Council of Agricultural Research, New Delhi), 1978.
- 11 Kumar R & Saikia P, Floristic analysis and dominance pattern of Sal (*Shorea robusta*) forests in Ranchi, Jharkhand, Eastern India, *J For Res*, (2018) 1-13. Available at <https://doi.org/10.1007/s11676-018-0829-9>.
- 12 Turner NC, Li FM, Xiong YC & Siddique KH, Agricultural ecosystem management in dry areas: challenges and solutions, *Plant and Soil*, 347(1-2) (2011) 1.
- 13 Sajem AL & Gosai K, Traditional use of medicinal plants by the Jaintia tribes in North Cachar Hills district of Assam, northeast India, *Journal of ethnobiology and ethnomedicine*, 2(1) (2006) 33.
- 14 JES, *Jharkhand Economic Survey 2013-2014*, (Department of Finance, Government of Jharkhand) 2014.
- 15 Majumdar K, Saha R, Datta BK & Bhakta T, Medicinal plants prescribed by different tribal and non-tribal medicine men of Tripura state, *Indian J Tradit Know*, 5(4) (2006) 559-562.
- 16 Saikia P & Khan ML, Diversity of medicinal plants and their uses in homegardens of Upper Assam, Northeast India, *Asian J Pharm Biol Res*, 1(3) (2011) 296-309.
- 17 Debbarma M, Pala NA, Kumar M & Bussmann RW, Traditional knowledge of medicinal plants in tribes of Tripura in northeast, India, *Afr J Tradit Complement Altern Med*, 14(4) (2017) 156-168.
- 18 Wilson KB, Ecological Dynamics and Human Welfare: A case study of population, health and nutrition in southern Zimbabwe, Doctoral dissertation, (Department of Anthropology, University College, UK), 1990.
- 19 Styger E, Rakotoarimanana JEM, Rabevohitra R & Fernandes ECM, Indigenous fruit trees of Madagascar: potential components of agroforestry systems to improve human nutrition and restore biological diversity, *Agrofo Syst*, 46(3) (1999) 289-310.
- 20 Djossa BA, Fahr J, Kalko EK & Sinsin BA, Fruit selection and effects of seed handling by flying foxes on germination rates of shea trees, a key resource in northern Benin, West Africa, *Ecotropica*, 14 (2008) 37-48.
- 21 Kujur AA, *The Oraon habitat, a study in cultural geography*, (The Daughters of St. Anne, Ranchi), 1989.
- 22 Sundriyal M & Sundriyal RC, Underutilized edible plants of the Sikkim Himalaya: Need for domestication, *Curr Sci*, 85(6) (2003) 731-736.
- 23 Rapoport EH, Raffaele E, Ghermandi L & Margutti L, Edible Weeds: A Scarcely Used Resource, *Bull Ecol Soc of America*, 76(3) (1995) 163-166.
- 24 Sinha R & Lakra V, Edible weeds of tribal of Jharkhand, Orissa and West Bengal, *Indian J Tradit Know*, 6(1) (2006) 217-222.
- 25 Islam MA, Quli SM, Sofi PA, Bhat GM & Malik AR, Livelihood dependency of indigenous people on forest in Jharkhand, India, *Vegetos*, 28(3) (2015) 106-18.
- 26 Sinha PS & Tripathi JP, Scheduled Tribes Socio-economic Status in Jharkhand, *IOSR J Res Method Edu*, 7(4) (2017) 47-53.
- 27 Gera P, Sub-Group on Sex Disaggregated Data of the IAWG on Gender and Development: Women's Role and Contribution to Forest-Based Livelihoods, (Human Resource Development Centre, United Nations Development Programme, New Delhi), 2002.
- 28 Shendage PN, Jadhav KL & Gaikwad DM, Employment, income and consumption pattern of tribals in Nashik, Maharashtra, *Int J Agri Sci*, 5(2) (2009) 351-354.
- 29 Marandi RR & Britto SJ, Medicinal Properties of Edible Weeds of Crop Fields and Wild Plants Eaten by Oraon Tribal of Latehar District, Jharkhand, *Int J Life Sci Pharma Res*, 5(2) (2015) 9-19.
- 30 Kumari R, Banerjee A, Kumar R, Kumar A, Saikia P & Khan ML, Deforestation in India: Consequences and Sustainable Solutions, In: *Deforestation Around the World*, (MN Suratman & ZA Latif), Intech Open, London, UK, 2019, 1-13.
- 31 FSI, *India State of Forest Report*, Forest Survey of India, Dehradun, India, 2011, 286.
- 32 Nayak BP, Kohli P & Sharma JV, *Livelihood of local communities and forest degradation in India: issues for REDD+*, The Energy and Resources Institute, 2014.
- 33 Verma SK & Paul SK, Sustaining the non-timber forest products (NTFPs) based rural livelihoods of tribals in Jharkhand: Issues and Challenges, *Jhar J Dev Mag Stud., XISS, Ranchi*, 14(1) (2016) 6865-6883.
- 34 Grove JF, Volatile compounds from the mycelium of the mushroom *Agaricus bisporus*, *Phytochem*, 20(8) (1981) 2021-2022.
- 35 Hong F, Yan J, Baran JT, Allendorf DJ, Hansen RD, Ostroff GR, Xing PX, Cheung NK & Ross GD, Mechanism by which orally administered β -1, 3-glucans enhance the tumoricidal activity of antitumor monoclonal antibodies in murine tumor models, *J Immunol*, 173(2) (2004) 797-806.
- 36 Khare CP, *Indian Medicinal Plants, An illustrated Dictionary*, Springer Science and Business Media, 2007, 710.
- 37 Irvine FR, *Woody plants of Ghana*, Woody plants of Ghana, Oxford University Press, London, 1961.
- 38 Wu CH, Hsieh HT, Lin JA & Yen GC, *Alternanthera paronychioides* protects pancreatic β -cells from glucotoxicity by its antioxidant, antiapoptotic and insulin secretagogue actions *Food Chem*, 139(1-4) (2013) 362-370.
- 39 Rajasab AH & Isaq M, Documentation of folk knowledge on edible wild plants of North Karnataka, *Indian J Tradit Know*, 3(4) (2004) 419-429.
- 40 Li W, Xu X, Zhang H, Ma C, Fong H, van Breemen R & Fitzloff J, Secondary metabolites from *Andrographis paniculata*, *Chem Pharm Bull*, 55(3) (2007) 455-458.
- 41 Zhu L, Dai J, Yang L & Qiu J, Anthelmintic activity of *Arisaema franchetianum* and *Arisaema lobatum* essential oils against *Haemonchus contortus*, *J Ethnopharmacol*, 148(1) (2013) 311-316.
- 42 Venkatesan N, Thiyagarajan V, Narayanan S, Arul A, Raja S, Kumar SV & Perianayagam JB, Anti-diarrhoeal potential of *Asparagus racemosus* wild root extracts in laboratory animals, *J Pharm Pharm Sci*, 8(1) (2005) 39-46.

- 43 Iqbal Z, Lateef M, Jabbar A, Akhtar MS & Khan MN, Anthelmintic Activity of *Vernonia anthelmintica*. Seeds against Trichostrongylid Nematodes of Sheep, *Pharm Biol*, 44(8) (2006) 563-567.
- 44 Gambhire M, Wankhede S & Juvekar A, Anti-inflammatory activity of aqueous extract of *Barleria cristata* leaves, *J Young Pharm*, 1(3) (2009) 220-220.
- 45 Awasthi AK, Kunal K, Bisht GS & Awasthi SA, In vitro antibacterial and antifungal activity of *Carissa opaca* Stapf ex Haines, *Int J Curr Pharm Res*, 5 (2013) 15-8.
- 46 Devmurari V, Shivanand P & Jivani NP, A review on *Carissa congesta*: phytochemical constituents, traditional use and pharmacological properties, *Int J Chem Sci*, 8(1) (2010) 81-87.
- 47 Bilal A, Khan NA, Ghuffran A, & Inamudd in HA, Pharmacological investigation of *Cassia sophera* L. var. *purpurea* Roxb, *Med J Islamic World Acad Sci*, 15 (2005) 105-109.
- 48 Nagore DH, Ghosh, VK & Patil MJ, Evaluation of antiasthmatic activity of *Cassia sophera* Linn, *Pharmacog magazine*, 5(19) (2009) 109.
- 49 Kirtikar KR & Basu BD, *Indian Medicinal Plants*, 2nd edition, Vol 3, International book distributor Dehradun, India, 1975, 2327-2328.
- 50 Inngjerdingen K, Nergård CS, Diallo D, Mounkoro PP & Paulsen BS, An ethnopharmacological survey of plants used for wound healing in Dogonland, Mali, West Africa, *J Ethnopharmacol*, 92(2-3) (2004) 233-44.
- 51 Rahman MM & Rumzhum NN, Evaluation of Antioxidant and Antinociceptive Properties of Methanolic Extract of *Clerodendrum viscosum* Vent, *Stamford, J Pharm Sci*, 4(1) (2011) 74-78.
- 52 Dewanjee S, Kundu M, Maiti A, Majumdar R, Majumdar A & Mandel SC, In vitro evaluation of antimicrobial activity of crude extract from plants *Diospyros peregrina*, *Coccinia grandis* and *Swietenia macrophylla*, *Trop J Pharm Res*, 6(3) (2007) 773-8.
- 53 Salatino A, Salatino ML, Negri G. Traditional uses, chemistry and pharmacology of *Croton* species (Euphorbiaceae), *J Brazilian Chem Soc*, 18(1) (2007) 11-33.
- 54 Joy PP, Thomas J, Samuel M & Skaria BP, *Curculigo orchioideis*: a plant for health care, *Indian J Arecanut Spices Medicinal Plants*, 6 (2004) 131-4.
- 55 Sikha A & Harini A, Pharmacological activities of wild turmeric (*Curcuma aromatica* Salisb): a review, *J Pharmacog Phytoche*, 3(5) (2015) 01-04.
- 56 Kumar A, Chomwal R, Kumar P & Sawal R, Anti-inflammatory and wound healing activity of *Curcuma aromatica* salisb extract and its formulation, *J Chem Pharm Res*, 1(1) (2009) 304-310.
- 57 Kirtikar KR & Basu BD, *Indian Medicinal Plants*, Vol 3, (International book distributor Allahabad, India) 1996, 2247.
- 58 Al-Snafi AE, A review on *Cyperus rotundus* A potential medicinal plant, *IOSR J Pharm*, 6(7) (2016) 32-48.
- 59 Ritika S, P Bharat & K Atul, Efficacy of aqueous and methanolic extracts of plant *Desmodium triflorum* for potential antibacterial activity, *Int J Pharm Sci Res*, 4(5) (2013) 1975-1981
- 60 Bhosle V, Anticonvulsant and antioxidant activity of aqueous leaves extract of *Desmodium triflorum* in mice against pentylenetetrazole and maximal electroshock induced convulsion, *Rev bras*, 23(4) (2013) 692-698.
- 61 Rajeswari J & Rani S, Medicinal Plants Used As Abortifacients - A Review, *Int J Pharma Sci Rev and Res*, 24(1) (2014) 129-134.
- 62 Manthri S, Sravanthi KC & Sidagonde S, Anthelmintic activity of tomato leaf extract, *J. Phytol*, 3(3) (2011) 15-17.
- 63 Kala CP, Aboriginal uses and management of ethnobotanical species in deciduous forests of Chhattisgarh state in India, *J Ethnobiol Ethnomed*, 5(1) (2009) 20.
- 64 Taylor RS, Manandhar NP & Towers GHN, Screening of selected medicinal plants of Nepal for antimicrobial activities, *J Ethnopharmacol*, 46(3) (1995) 153-159.
- 65 Kabiru A & Por LY, Elephantopus species: traditional uses, pharmacological actions and chemical composition, *Int J Adv Life Sci*, 15 (2013) 6-13.
- 66 Al-Zubairi AS, Abdul AB, Abdelwahab SI, Peng CY, Mohan S & Elhassan MM. *Eleusine indica* possesses antioxidant, antibacterial and cytotoxic properties, *Evid Based Compl Alt*, 2011 (2011) 1-6.
- 67 Ghani A, Medicinal plants of Bangladesh: chemical constituents and uses, *Asiat Soc Bangladesh*, (1998).
- 68 Kumar S, Malhotra R & Kumar D, *Euphorbia hirta*: Its chemistry, traditional and medicinal uses, and pharmacological activities, *Pharmacogn Rev*, 4(7) (2010) 58.
- 69 Dash GK, Bijayini M, Panda A, Patro CP & Ganapaty S, Anthelmintic activity of *Evolvulus nummulariu*, *Indian J Nat Prod*, 19(3) (2003) 24-25.
- 70 Saini V, Kinger HK, Sharma DK, Ahuja N, Middha A & Gupta VB, Wound Healing Activity of *Evolvulus numularius* L, *Asian J Chem* 19(7) (2007) 5772.
- 71 Kaou AM, Mahiou-Leddet V, Canlet C, Debrauwer L, Hutter S, Laget M & Ollivier E, Antimalarial compounds from the aerial parts of *Flacourtia indica* (Flacourtiaceae), *J Ethnopharmacol*, 130(2) (2010) 272-274.
- 72 Lalsare S, Verma PK, Khatak M, Ranjan S, Rajurakar S & Gurav SS, Anti-inflammatory and Antimicrobial activity of *Flacourtia ramontchi* Leaves, *Int J Drug Develop Res*, 3(2) (2011) 308-313.
- 73 Sudha P, Zinjarde SS, Bhargava SY & Kumar AR, Potent α -amylase inhibitory activity of Indian Ayurvedic medicinal plants, *BMC Complement Altern Med*, 11(1) (2011) 5.
- 74 Chadha YK, The wealth of India, A dictionary of Indian raw materials industrial products, Council of Scientific and Industrial Research, New Delhi, 1991.
- 75 Reddy JS, Rao PR & Reddy MS, Wound healing effects of *Heliotropium indicum*, *Plumbago zeylanicum* and *Acalypha indica* in rats, *J Ethnopharmacol*, 79(2) (2002) 249-251.
- 76 Zarei M & Javarappa KM, Anticarcinogenic and cytotoxic potential of *Hemidesmus indicus* root extract against Ehrlich Ascites tumor, *Der Pharmacia Lettre*, 4 (2012) 906-910.
- 77 Kalim MD, Bhattacharyya D, Banerjee A & Chattopadhyay S, Oxidative DNA damage preventive activity and antioxidant potential of plants used in Unani system of medicine, *BMC Complement Altern Med*, 10(1) (2010) 77.
- 78 Abdullah M, Muhammed G & Abdulkadir NU, *Medicinal and Economic Plants of Nupe Land*, (Jube Evans Books and Publications, Bida, Nigeria), 2003, 276.
- 79 Danmalam UH, Abdullahi LM, Agunu A & Musa KY, Acute toxicity studies and hypoglycemic activity of the methanol extract of the leaves of *Hyptis suaveolens* Poit. (Lamiaceae), *Niger J Pharm Sci*, 8(2) (2009) 87-92.

- 80 Ambasta SP, *Useful Plants of India*, (National Institute of Science Communication New Delhi, India), 1999, 283.
- 81 Chatterjee A & Pakrashi SC, *Treaties on Indian medicinal plants*, (National institute of science communication and information resources, New Delhi, India), 3 (2003) 146-147
- 82 Adsul VB, Khatiwora E, Torane R & Deshpande NR, Antimicrobial activities of *Ipomoea carnea* leaves, *J Nat Prod Plant Resour*, 2(5) (2012) 597-600.
- 83 Kumarasamyraja D, Jeganathan NS & Manavalan R, Pharmacological review of *Lantana camara* L. review article, *Int J Pharm Res*, 2(1) (2012) 1-5.
- 84 Benjamin A & Manickam VS, Medicinal pteridophytes from the Western Ghats, *Indian J Tradit Know*, 6(4) (2007) 611-618.
- 85 Taylor RS, Manandhar NP, Hudson JB & Towers GHN, Antiviral activities of Nepalese medicinal plants, *J Ethnopharmacol*, 52(3) (1996) 157-163.
- 86 Akshatha KN, Mahadeva Murthy S & Lakshmidevi N, Ethnomedical uses of *Madhuca longifolia*: A review, *Int J Life Sci Pharma Res*, 3(1) (2013) 44.
- 87 Balakrishnan S & Subramanian M, A Review on *Marsilea quadrifolia* L. - A Medicinally Important Plant, *J Compre Pharmacy*, 3(2) (2016) 38-44.
- 88 Haripyaree A, Guneshwor K & Damayanti M, Evaluation of antioxidant properties of some wild edible fruit extracts by cell free assays, *Elect J Env Agri food Chem*, 9(2) (2010) 345-350.
- 89 Prasanna KBR, Mohammed K & Gowda KPS, Anti-inflammatory and analgesic activity of aqueous extract of leaves of *Mimosa pudica* L, *Biomed*, 4 (2009)141-6.
- 90 Aalok PK, Lajjalu-an indispensable drug for blood pressure, *Sachitra Ayurved* 50(1) (1997) 21-2.
- 91 Kirtikar KR & Basu BD, *Indian Medicinal Plants*, Vols 1-4, (Bishen Sing Mahendra pal Sing, Dehra Dun, India), 1991.
- 92 Chang HM, But PP & Yao SC, *Pharmacology and applications of Chinese materia medica*, Vol 1, (World Scientific publishing Co. Pte. Ltd, Singapore), 1986.
- 93 Badwaik H, Singh MK, Thakur D, Giri TK & Tripathi DK, The Botany, Chemistry, Pharmacological and Therapeutic Application of *Oxalis corniculata* Linn-A Review, *Int J Phytomed*, 3(1) (2011) 01.
- 94 Antia BS, Okokon JE, Umoh EE & Udobang JA, Antidiabetic activity of ethanolic leaf extract of *Panicum maximum*, *Int J Drug Dev Res*, 2(3) (2010) 488-92.
- 95 Ganeshbabu NM, Ravikumar K, Shankar V, Ved DK, & Ganesan, R, On The Distribution and Ethnobotany of *Peucedanum dhanavar. Dalzellii* (Apiaceae), A Little Known Endemic from Southern India, *Indian J For*, 30(2) (2007) 167-170.
- 96 Raphael KR, Sabu MC & Kuttan R, Antidiabetic activity of *Phyllanthus niruri*, *Amala Res Bull*, 20 (2000) 19-25.
- 97 Neraliya S & Ratna G, Juvenoid activity in plant extracts against filarial mosquito *Culex quinquefasciatus*. *J Med Aro Plant Sci*, 26(1) (2004) 34-38.
- 98 Kirtikar KR & Basu BD, *Indian Medicinal Plants*, (Lalit Mohan Basu Publications, Allahabad, India), 1987, 1385-1386.
- 99 Shukla R, Sumit G, Sajal S, Dwivedi PK & Mishra A, Medicinal importance of bamboo, *Int J Bioph Phytochem Res*, 1(1) (2012) 9-15.
- 100 Ahmed M, Shikha HA, Sadhu SK, Rahman MT & Datta BK, Analgesic, diuretic, and anti-inflammatory principle from *Scoparia dulcis*, *Pharmazie*, 56(8) (2001) 657-60.
- 101 Li Y & Ohizumi Y, Search for constituents with neurotrophic factor-potentiating activity from the medicinal plants of Paraguay and Thailand, *Yakugaku Zasshi*, 124(7) (2004) 417-424.
- 102 Doughari JH, El-Mahmood AM & Tyoyina I, Antimicrobial activity of leaf extracts of *Senna obtusifolia* (L), *Afr J Pharm Pharmacol*, 2(1) (2008) 07-13.
- 103 Shukla SK, Kumar A, Terrence M, Yusuf J, Singh VP & Mishra M, The probable medicinal usage of *Cassia tora*: an overview, *Online J Biol Sci* 13(1) (2013) 13.
- 104 Wani TA, Kumar D, Prasad R, Verma PK, Sardar KK, Tandan SK & Kumar D, Analgesic activity of the ethanolic extract of *Shorea robusta* resin in experimental animals, *Ind J Pharmacol*, 44(4) (2012) 493.
- 105 Soni RK, Dixit V, Irchhaiya R & Singh H, A review update on *Shorea robusta* Gaertn f. (Sal), *J Drug Deliv Therapeutics*, 3(6) (2013) 127-132.
- 106 Galal A, Raman V & A Khan I, *Sida cordifolia*, a Traditional Herb in Modern Perspective-A Review, *Curr Tradit Med*, 1(1) (2015) 15-17.
- 107 Kokoshi CJ, Koksiki RJ & Sloma FJ, Methods for the analysis of various compound in plants, *J Pharmacog Associa*, 1958, 10-16.
- 108 Asolkar LV & Chopra RN, *Second supplement to glossary of Indian medicinal plants with active principles*, (Publications & Information Directorate, New Delhi) 24 (1992) 87-90.
- 109 Hossain AM, Saha S, Asadujjaman M & Kahan, AS, Analgesic, antioxidant and antibacterial activity of *Smilax zeylanica* L. (Family: Smilacaceae), *Pharmacologyonline*, 1 (2013) 244-250.
- 110 Sultana R, Rahman MS, Bhuiyan MNI, Begum J & Anwar MN, In vitro antibacterial and antifungal activity of *Borreria articularis*, *Bangladesh J Microbiol*, 25(2) (2008) 95-98.
- 111 Sivaelango G, Kumaran PS, Kumaravel P, Revathi P & Jaswant A, Antihyperlipidaemic activity of *Spermacoce hispida* ethanolic extract in Triton WR-1339 induced hyperlipidaemic rats, *J Appl Pharma Sci*, 2(2) (2012) 95.
- 112 Sriram TG, Kumar KK, Jayaprakash MR, Sriram R & Shanmugham V, Informed consent: A study of experiences and opinion of utilizers of health services from India, *Soc Sci Med*, 32(12) (1991) 1389-1392.
- 113 Jayakar B & Sangameswaran B, Anti-diabetic activity of *Thespesia lampas* Dalz & Gibs on alloxan induced rats, *Ori Pharma Experi Med*, 8(4) (2008) 349-353.
- 114 Singh RP, Banerjee S, Kumar PVS, Raveesha KA & Rao AR, *Tinospora cordifolia* induces enzymes of carcinogen/drug metabolism and antioxidant system, and inhibits lipid peroxidation in mice, *Phytomed*, 13(1-2) (2006) 74-84.
- 115 Rao SK & Rao PS, Alteration in the radio sensitivity of HeLa cells by dichloromethane extract of guduchi (*Tinospora cordifolia*), *Integ can therap*, 9(4) (2010) 378-384.
- 116 Lissy KP, Simon TK & Lathab MS, Antioxidant potential of *Sida retusa*, *Urena lobata* and *Triumfetta rhomboidea*, *Ancient Sci Life*, 25(3-4) (2006) 10.

- 117 Zhang P, Likai SU, Huimin LI, Zhao Y, Yang Z & Cui X, Protective effects of physcion against cerebral injury induced by ischemia reperfusion in rats, *Chin J Pathophysiol*, (1999) 09.
- 118 Yang Y, Shang W, Zhou L, Jiang B, Jin H & Chen M, Emodin with PPAR γ ligand-binding activity promotes adipocyte differentiation and increases glucose uptake in 3T3-L1 cells, *Biochem Biophys Res Commun*, 353(2) (2007) 225-230.
- 119 Garg N & Jain, A Therapeutic and Medicinal Uses of Draksha - A Review, *Int J Sci Res*, (2015) 2365-2369.
- 120 Shukla R, Chakravarty M & Gautam MP, Indigenous medicine used for treatment of gynecological disorders by tribal of Chhattisgarh, India, *J Med Plants Res*, 2(12) (2008) 356-360.
- 121 Kumar D, Sharma M, Sorout A, Saroha K & Verma S, *Woodfordia fruticosa* Kurz.: A Review on its Botany, Chemistry and Biological activities, *J Pharmacog Phytoche*, 5(3) (2016) 293.