

## Biological activities and phytochemical investigation of some *Sideritis* species

Nuraniye Eruygur<sup>a,\*</sup>, Damla Kırıcı<sup>a,b</sup>, Fatma Ayaz<sup>a</sup>, Yavuz Bağcı<sup>c</sup>, Süleyman Doğu<sup>d</sup> & Mustafa Abdullah Yılmaz<sup>e,f</sup>

<sup>a</sup>Department of Pharmacognosy, Faculty of Pharmacy, Selcuk University, 42250, Konya, Türkiye

<sup>b</sup>Department of Pharmacognosy, Faculty of Pharmacy, İzmir Katip Çelebi University, 35600, İzmir, Türkiye

<sup>c</sup>Department of Pharmaceutical Botany, Faculty of Pharmacy, Selcuk University, 42250, Konya, Türkiye

<sup>d</sup>Department of Medical and Aromatic Plants, Meram Vocational School, Necmettin Erbakan University, 42250, Konya, Türkiye

<sup>e</sup>Dicle University Science and Technology Research and Application Center, 21280, Diyarbakir, Türkiye

<sup>f</sup>Department of Analytical Chemistry, Faculty of Pharmacy, Dicle University, 21280, Diyarbakir, Türkiye

\*E-mail: nuraniye.eruygur@selcuk.edu.tr

Received 23 December 2022; revised 25 July 2024; accepted 31 July 2024

### Supplementary Data

Supplementary Table S1 — LC–MS/MS quantification of phytochemicals in methanol and water extracts of the *Sideritis* species (mg compound/g extract)

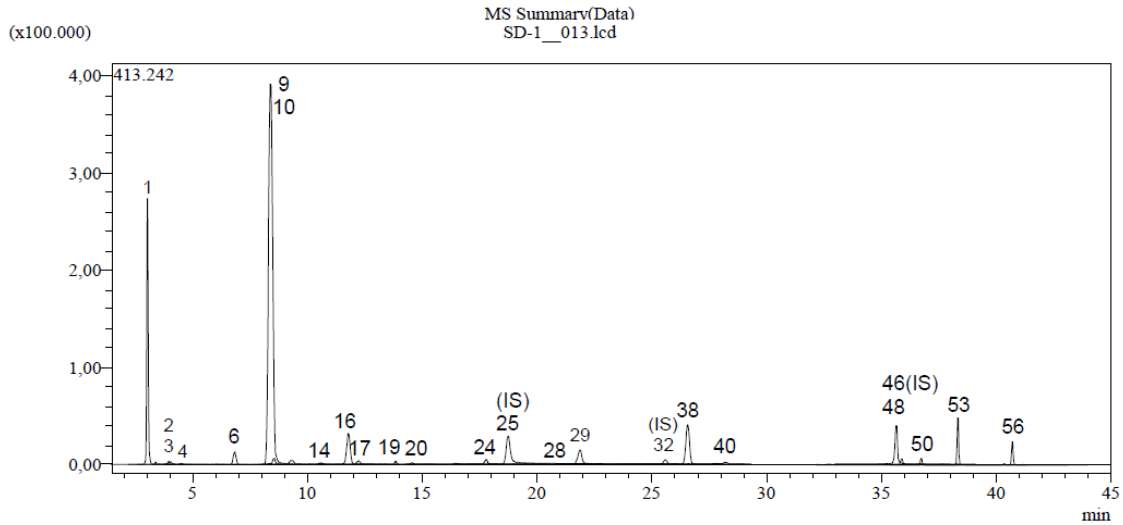
No	Analyte	SBiM	SBiW	SBM	SBW	SCM	SCW	SEM	SEW	SHM	SHW	SLM	SLW	SLVM	SLVW
1	Quinic acid	18.493	27.459	18.736	28.812	12.864	2.603	38.508	5.684	31.135	8.661	24.559	2.375	40.944	3.86
2	Fumaric acid	1.909	1.302	1.364	2.436	1.461	0.381	1.737	0.497	2.215	2.429	1.132	1.784	4.179	0.56
3	Aconitic acid	0.021	0.080	0.001	0.007	0.003	0.007	0.017	0.010	0.068	0.065	0.035	0.051	0.337	0.02
4	Gallic acid	0.023	0.131	0.023	0.001	0.017	0.026	0.019	0.001	0.044	0.009	0.023	0.021	0.024	0.001
5	Epigallocatechin	0.001	0.001	0.001	0.001	0.001	0.001	0.001	0.001	0.001	0.001	0.001	0.001	0.001	0.001
6	Protocatechuic acid	0.374	1.142	0.516	0.774	0.355	0.748	0.199	0.042	0.514	0.024	0.124	2.692	0.555	0.25
7	Catechin	0.001	0.001	0.001	0.001	0.001	0.001	0.001	0.001	0.001	0.001	0.001	0.001	0.001	0.001
8	Gentisic acid	0.001	0.001	0.001	0.025	0.001	0.116	0.001	0.001	0.043	0.001	0.001	0.001	0.001	0.001
9	Chlorogenic acid	8.318	0.548	17.101	14.733	4.443	0.014	23.050	0.007	10.300	0.001	3.964	0.026	18.506	0.06
10	Protocatechuic aldehyde	0.101	0.070	0.169	0.027	0.066	0.017	0.054	0.028	0.058	0.010	0.029	0.015	0.104	0.02
11	Tannic acid	0.001	0.001	0.001	0.001	0.001	0.001	0.001	0.001	0.001	0.001	0.001	0.027	0.001	0.001
12	Epigallocatechin gallate	0.001	0.001	0.001	0.001	0.001	0.001	0.001	0.001	0.001	0.001	0.001	0.001	0.001	0.001
13	1,5-dicaffeoylquinic acid	0.001	0.001	0.001	0.001	0.001	0.001	0.001	0.001	0.001	0.001	0.001	0.001	0.001	0.001
14	4-OH Benzoic acid	0.173	0.662	0.021	0.080	0.030	0.021	0.083	0.191	0.024	0.419	0.001	0.857	0.612	0.90
15	Epicatechin	0.001	0.001	0.001	0.001	0.001	0.001	0.001	0.001	0.001	0.001	0.001	0.001	0.001	0.001
16	Vanilic acid	0.864	0.229	0.290	0.001	0.206	0.001	0.149	0.237	0.671	0.135	0.137	0.151	0.204	0.001
17	Caffeic acid	0.198	0.571	0.127	0.354	0.092	0.197	0.084	0.006	0.063	0.001	0.023	0.001	0.172	0.01
18	Syringic acid	0.001	0.226	0.001	0.001	0.001	0.001	0.001	0.001	0.207	0.137	0.001	0.237	0.143	0.20
19	Vanillin	0.065	0.050	0.071	0.001	0.055	0.039	0.047	0.084	0.224	0.461	0.001	0.142	0.091	0.06
20	Syringic aldehyde	0.079	0.013	0.001	0.001	0.038	0.001	0.001	0.024	0.046	0.001	0.001	0.001	0.001	0.001
21	Daidzin	0.001	0.001	0.001	0.001	0.001	0.001	0.001	0.001	0.001	0.001	0.001	0.001	0.001	0.001
22	Epicatechingallate	0.001	0.001	0.001	0.001	0.001	0.001	0.001	0.001	0.001	0.001	0.001	0.001	0.001	0.001
23	Piceid	0.001	0.001	0.001	0.001	0.001	0.001	0.001	0.001	0.001	0.001	0.001	0.001	0.001	0.001
24	p-Coumaric acid	0.131	0.190	0.094	0.003	0.127	0.015	0.082	0.050	0.135	0.161	0.060	0.447	0.148	0.02
25	Ferulic acid-D3-IS	-	-	-	-	-	-	-	-	-	-	-	-	-	-
26	Ferulic acid	0.001	0.128	0.001	0.001	0.001	0.001	0.001	0.052	0.001	0.001	0.191	0.001	0.221	0.001
27	Sinapic acid	0.001	0.001	0.001	0.001	0.001	0.001	0.001	0.001	0.001	0.001	0.738	0.001	0.001	0.001
28	Coumarin	0.006	0.001	0.008	0.001	0.014	0.001	0.014	0.001	0.012	0.001	0.015	0.001	0.001	0.001
29	Salicylic acid	0.067	0.047	0.291	0.217	0.118	0.065	0.142	0.151	0.433	0.466	0.019	0.171	0.191	0.12
30	Cyanoside	0.001	0.001	0.001	0.001	0.001	0.001	0.001	0.001	0.001	0.001	0.001	0.001	0.001	0.001

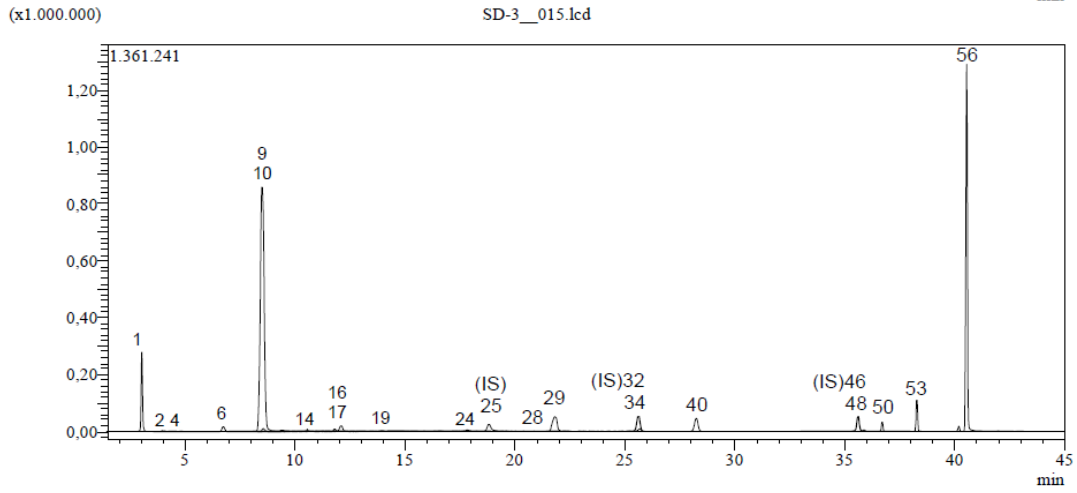
... Contd.

Supplementary Table S1 — LC-MS/MS quantification of phytochemicals in methanol and water extracts of the *Sideritis* species (mg compound/g extract) (Contd.)

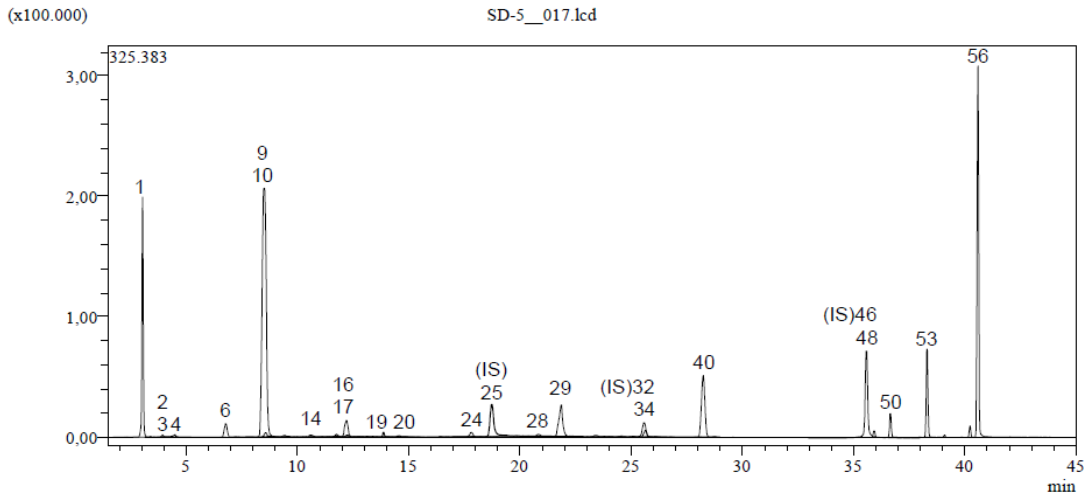
No	Analyte	SBiM	SBiW	SBM	SBW	SCM	SCW	SEM	SEW	SHM	SHW	SLM	SLW	SLVM	SLVW
31	Miquelianin	0.001	0.001	0.001	0.001	0.001	0.001	0.001	0.001	0.001	0.001	0.001	0.001	0.001	0.001
32	Rutin-D3-IS	-	-	-	-	-	-	-	-	-	-	-	-	-	-
33	Rutin	0.001	0.001	0.001	0.001	0.001	0.001	0.001	0.001	0.001	0.001	0.001	0.001	0.001	0.001
34	isoquercitrin	0.001	0.001	0.070	0.001	0.021	0.001	0.019	0.001	0.001	0.001	0.001	0.001	0.001	0.001
35	Hesperidin	0.001	0.001	0.001	0.001	0.001	0.001	0.001	0.001	0.001	0.001	0.001	0.001	0.001	0.001
36	O-Coumaric acid	0.001	0.001	0.001	0.001	0.001	0.001	0.001	0.001	0.001	0.001	0.001	0.001	0.001	0.001
37	Genistin	0.001	0.001	0.001	0.001	0.001	0.001	0.001	0.001	0.001	0.001	0.001	0.001	0.001	0.001
38	Rosmarinic acid	0.020	0.001	0.001	0.041	0.047	0.001	0.045	0.001	0.037	0.001	0.201	0.001	0.001	0.001
39	Ellagic acid	0.001	0.001	0.001	0.001	0.001	0.001	0.001	0.001	0.001	0.001	0.001	0.001	0.001	0.001
40	Cosmosiin	1.144	0.001	1.302	0.059	1.446	0.041	1.989	0.047	9.417	0.355	1.739	0.055	5.224	0.08
41	Quercitrin	0.001	0.001	0.001	0.001	0.001	0.001	0.001	0.001	0.001	0.001	0.001	0.001	0.001	0.001
42	Astragalin	0.001	0.001	0.001	0.001	0.001	0.001	0.001	0.001	0.001	0.001	0.001	0.001	0.001	0.001
43	Nicotiflorin	0.001	0.001	0.001	0.001	0.001	0.001	0.001	0.001	0.001	0.001	0.001	0.001	0.001	0.001
44	Fisetin	0.001	0.001	0.001	0.001	0.001	0.001	0.001	0.001	0.001	0.001	0.001	0.001	0.001	0.001
45	Daidzein	0.001	0.001	0.001	0.001	0.001	0.001	0.001	0.001	0.001	0.001	0.001	0.001	0.001	0.001
46	Quercetin-D3-IS	-	-	-	-	-	-	-	-	-	-	-	-	-	-
47	Quercetin	0.001	0.001	0.001	0.001	0.001	0.001	0.001	0.001	0.001	0.001	0.001	0.001	0.001	0.001
48	Naringenin	0.023	0.026	0.02	0.007	0.02	0.010	0.011	0.001	0.058	0.001	0.011	0.001	0.051	0.001
49	Hesperetin	0.001	0.001	0.001	0.001	0.001	0.001	0.001	0.001	0.001	0.001	0.001	0.001	0.001	0.001
50	Luteolin	0.016	0.033	0.068	0.105	0.047	0.045	0.038	0.001	0.026	0.001	0.004	0.001	0.024	0.001
51	Genistein	0.001	0.001	0.001	0.001	0.001	0.001	0.001	0.001	0.001	0.001	0.001	0.001	0.001	0.001
52	Kaempferol	0.001	0.001	0.001	0.001	0.001	0.001	0.001	0.001	0.001	0.001	0.001	0.001	0.001	0.001
53	Apigenin	0.078	0.223	0.177	0.175	0.122	0.102	0.125	0.001	1.251	0.004	0.065	0.001	0.326	0.01
54	Amentoflavone	0.001	0.001	0.001	0.001	0.001	0.001	0.001	0.001	0.001	0.001	0.001	0.001	0.001	0.001
55	Chrysin	0.001	0.001	0.001	0.001	0.001	0.001	0.001	0.001	0.001	0.001	0.001	0.001	0.001	0.001
56	Acacetin	0.11	0.187	6.181	0.127	1.453	0.019	0.379	0.006	0.033	0.002	0.013	0.002	0.047	0.002

IS: Internal Standard

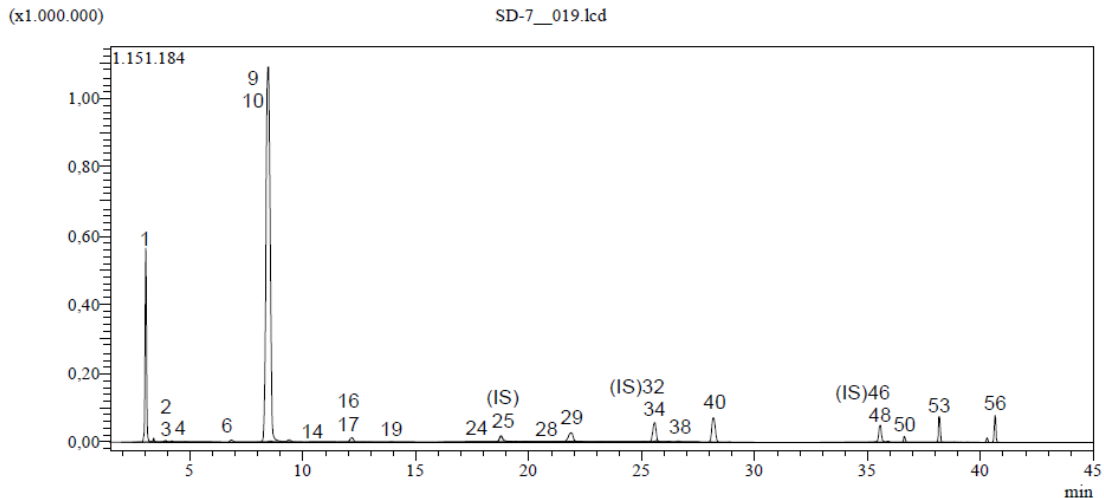
Supplementary Fig. S1 — TIC (Total Ion Chromatogram) of methanol extract of *Sideritis bilgeriana* P. H. Davis



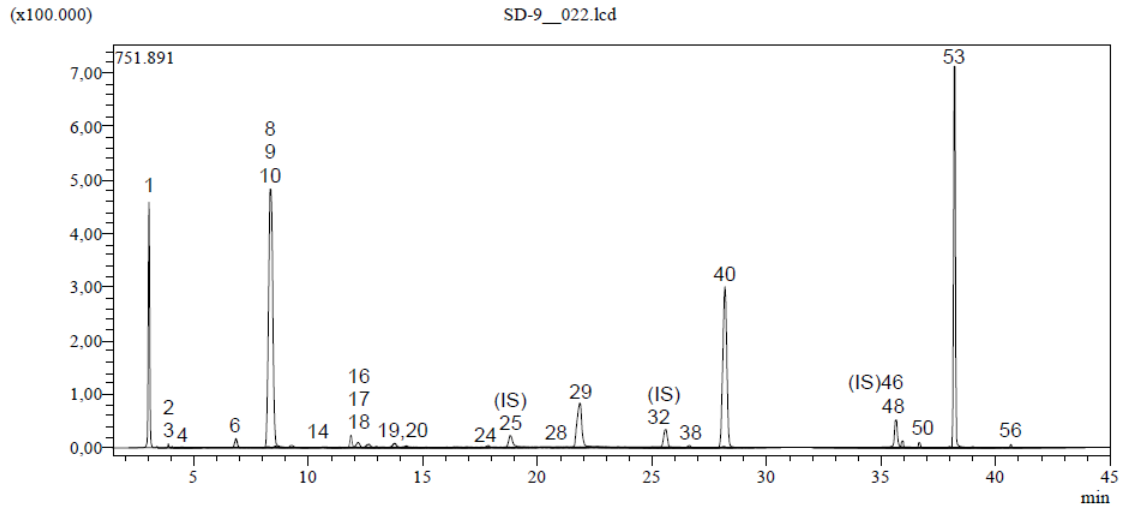
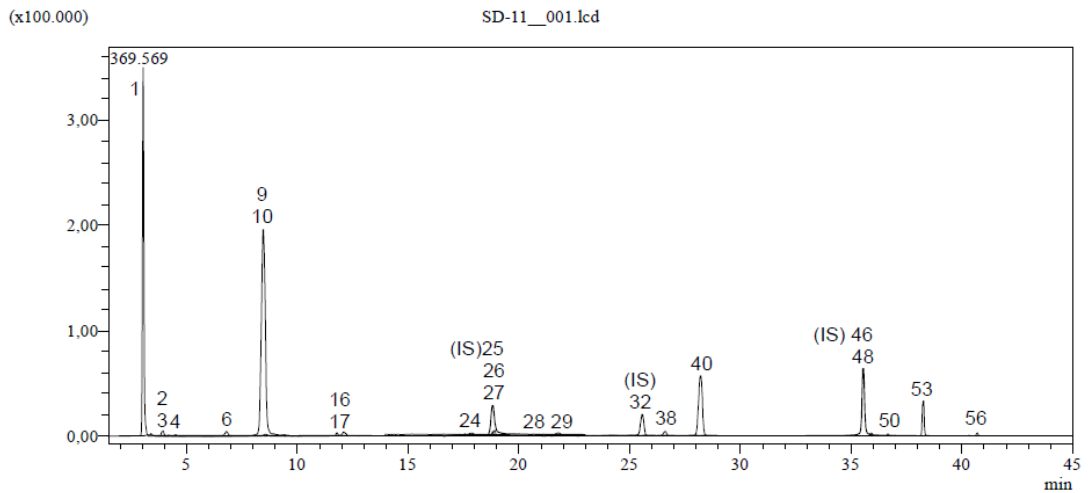
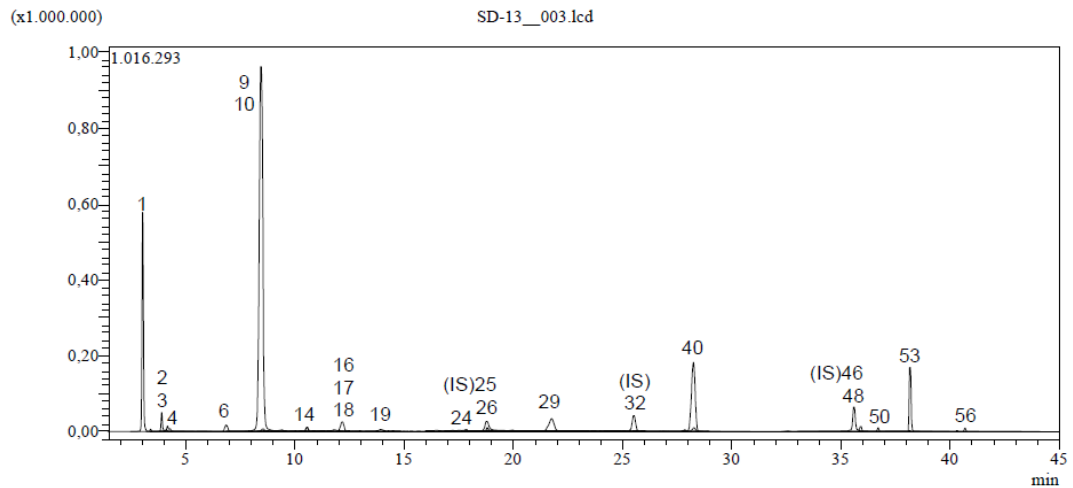
Supplementary Fig. S2 — TIC of methanol extract of *Sideritis brevidens* P.H. Davis

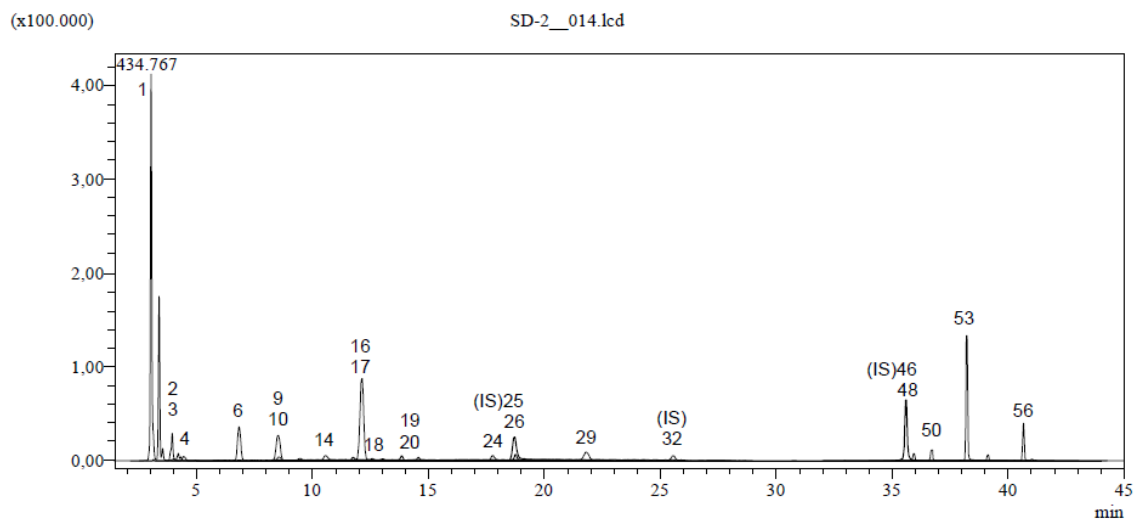
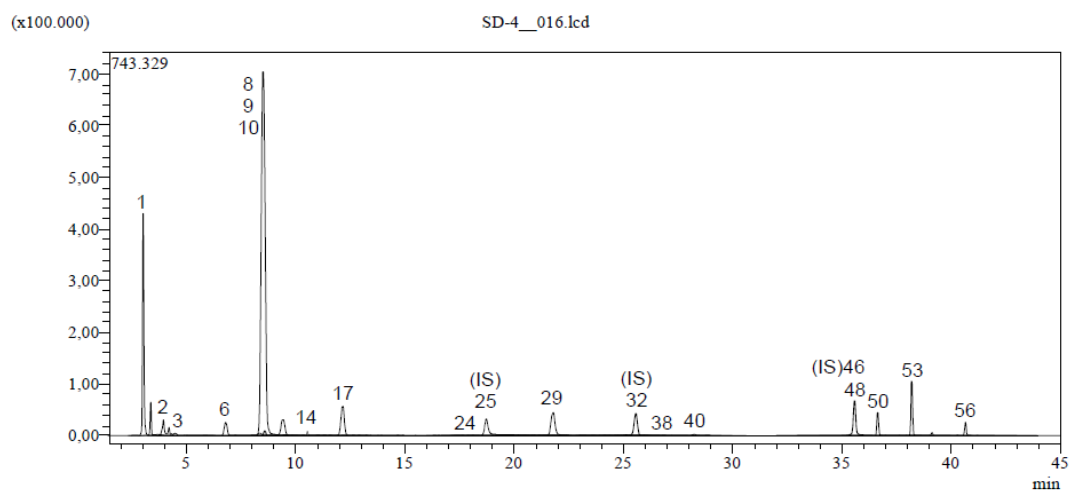
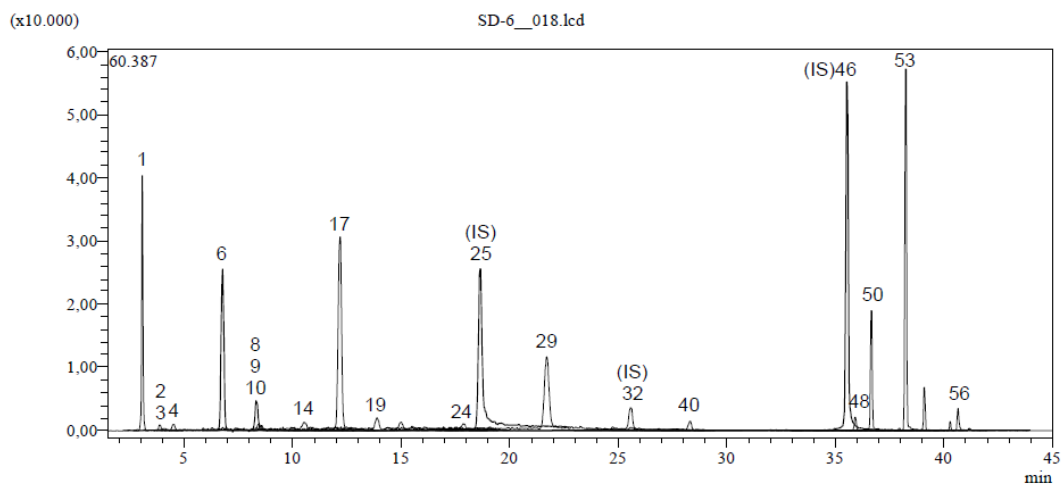


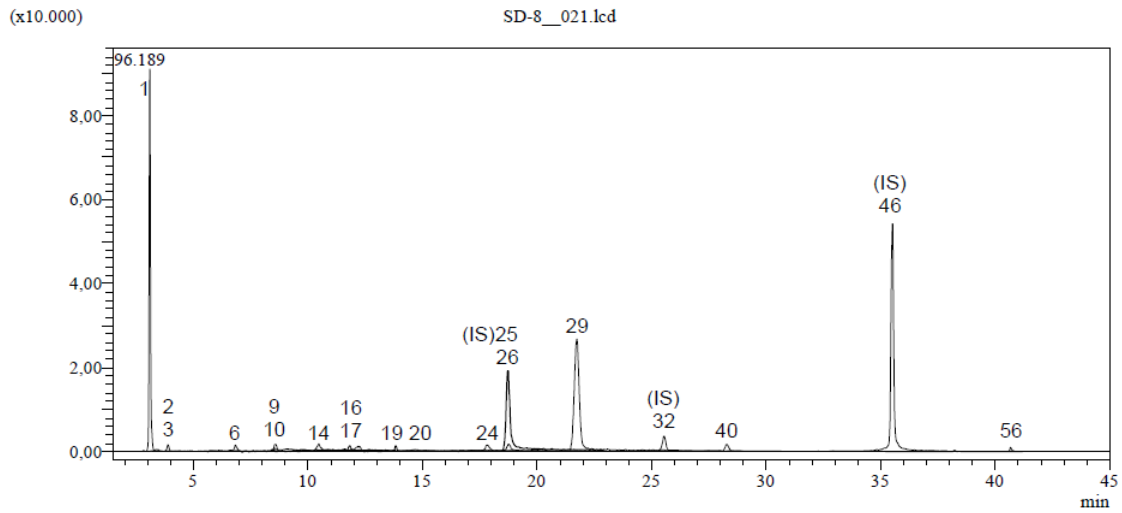
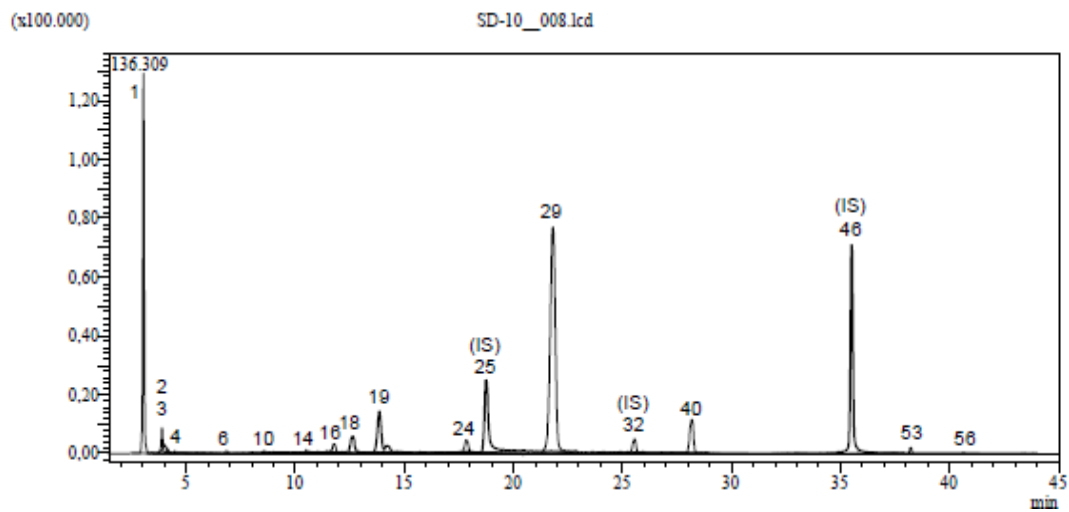
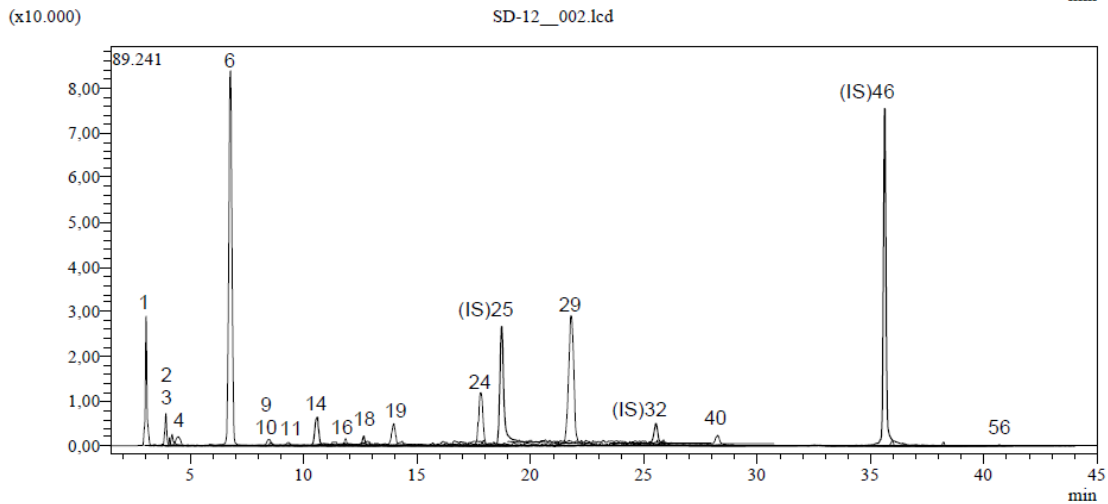
Supplementary Fig. S3 — TIC of methanol extract of *Sideritis cilicica* Boiss. & Balansa

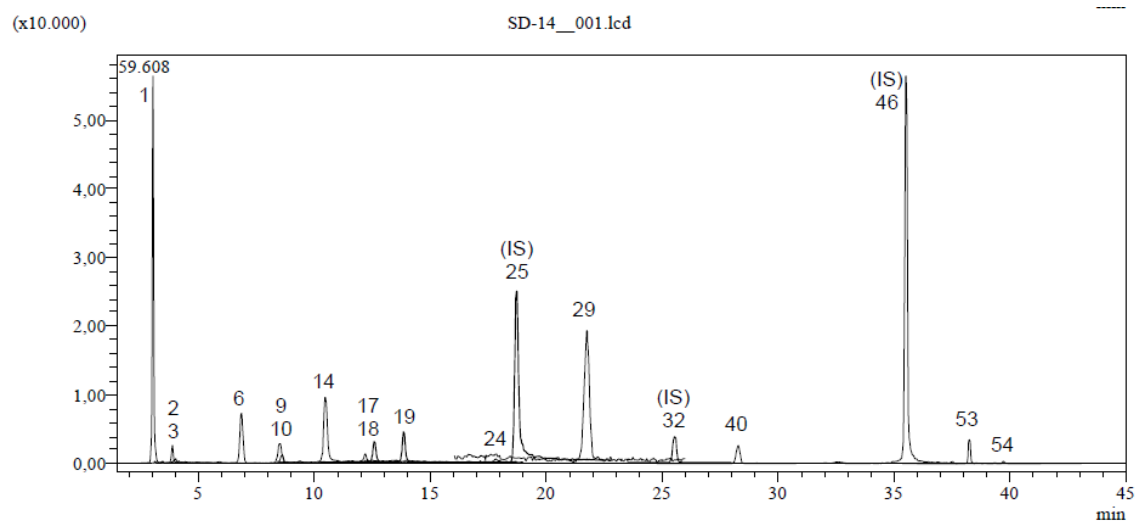


Supplementary Fig. S4 — TIC of methanol extract of *Sideritis erythrantha* Boiss. & Heldr. subsp. *cedretorum* P. H. Davis

Supplementary Fig. S5 — TIC of methanol extract of *Sideritis hololeuca* Boiss. & Heldr.Supplementary Fig. S6 — TIC of methanol extract of *Sideritis libanotica* Labill. subsp. *linearis* (Benth.) Bornm.Supplementary Fig. S7 — TIC of methanol extract of *Sideritis libanotica* Labill. subsp. *violascens* P. H. Davis

Supplementary Fig. S8 — TIC of water extract of *Sideritis bilgeriana* P. H. DavisSupplementary Fig. S9 — TIC of water extract of *Sideritis brevidens* P.H. DavisSupplementary Fig. S10 TIC of water extract of *Sideritis cilicica* Boiss. & Balansa

Supplementary Fig. S11 — TIC of water extract of *Sideritis erythrantha* Boiss. & Heldr. subsp. *cedretorum* P. H. DavisSupplementary Fig. S12 — TIC of water extract of *Sideritis hololeuca* Boiss. & Heldr.Supplementary Fig. S13 — TIC of water extract of *Sideritis libanotica* Labill. subsp. *linearis* (Benth.) Bornm.



Supplementary Fig. S14 — TIC of water extract of *Sideritis libanotica* Labill. subsp. *violascens* P. H. Davis